



Ignite Energy and Power Search

Land Holdings and Prospect Summary

Ignite Energy Corporation and Power Search Exploration own approximately 40,000 acres, (60 + Sections) of mineral rights in East Central, Southern and Northern Alberta, on proven geological trends.

Our focus has been to combine our 50 plus years of business experience and technical innovation in securing plays we believe have the greatest economic potential.

East Central Alberta:

The majority of our lands are in the East Central Alberta, which is currently active with both conventional and unconventional oil drilling in for Viking, Mannville and Nisku oil.

Provost Region:

- **Horseshoe Lake Area:** Twp 39 -41 Rge 7-8 W4M
 - Horseshoe Lake consists of large block of undeveloped lands with excellent Mannville and Viking oil potential.
- **Gooseberry Lake:** Twp 36 R Rge 6 W4M
 - A seismically identified multi-zone prospect with a potential of 600,000 plus bbls from the Dina.
- **Others:**
 - Prospects in **Amisk, David, Silver Heights, Battle River.**

Chauvin Region:

- **Edgerton/Ribstone:** Twp 43-44 Rng 4 W4M
 - Seismically identified Nisku location offsetting 2 producing wells in an active Nisku drilling area.

Consort Region:

- **Consort:** Twp 34-35 Rng 5 W4M
 - 2880 acres of contiguous land in active horizontal Viking oil.

Halkirk Region:

- **Halkirk:** Twp 41-43 Rng 14-15W4M
 - 4 sections on a Viking Oil trend.

Utikuma Region:

- **Utikuma Lake:** Twp 80 Rng 7 W5M
 - 4480 acres offsetting significant established Gilwood and Keg River production with horizontal drilling underway to the south.

Leduc:

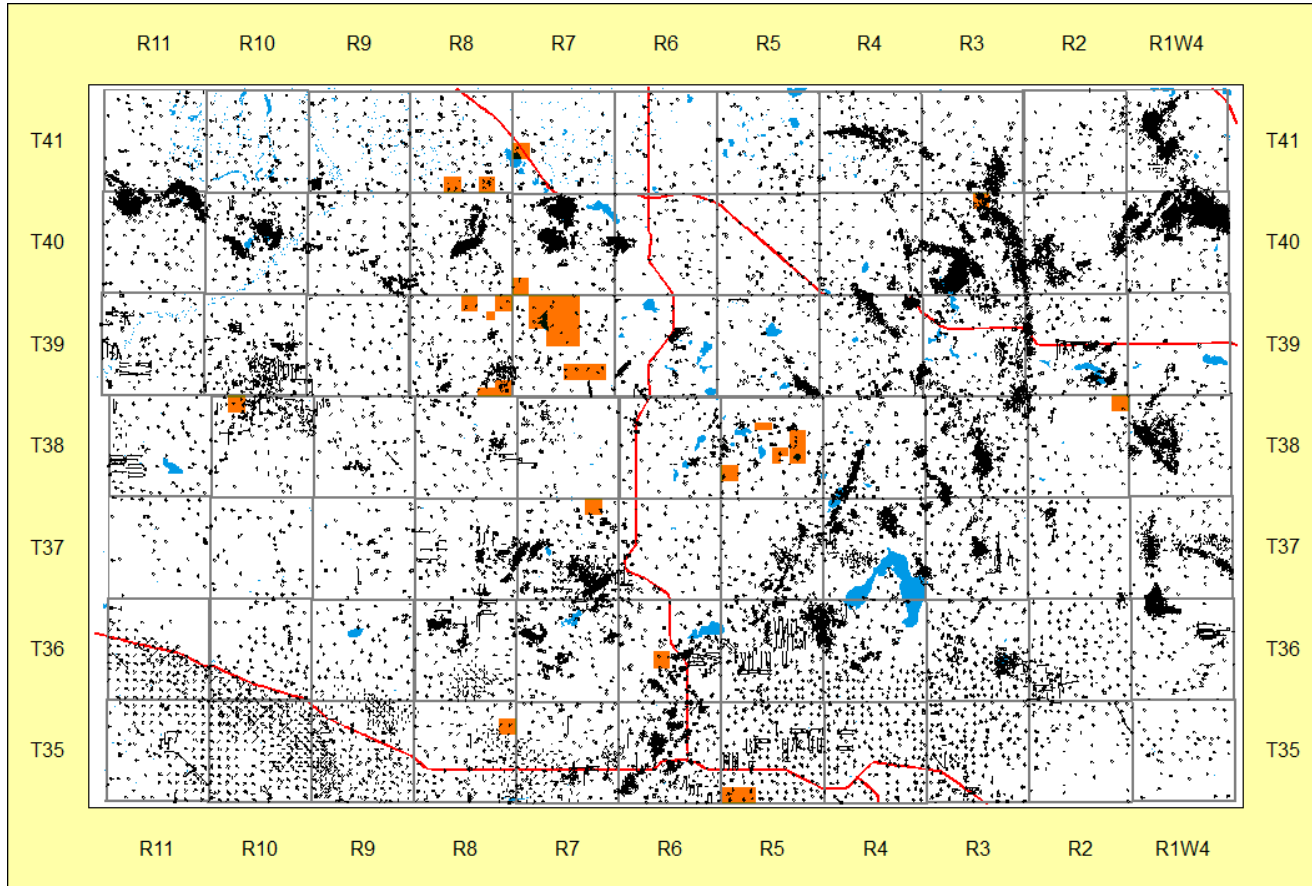
- **Leduc:** Twp 49 Rng 26 W4M
 - Nisku development and potential for Wabamun development.



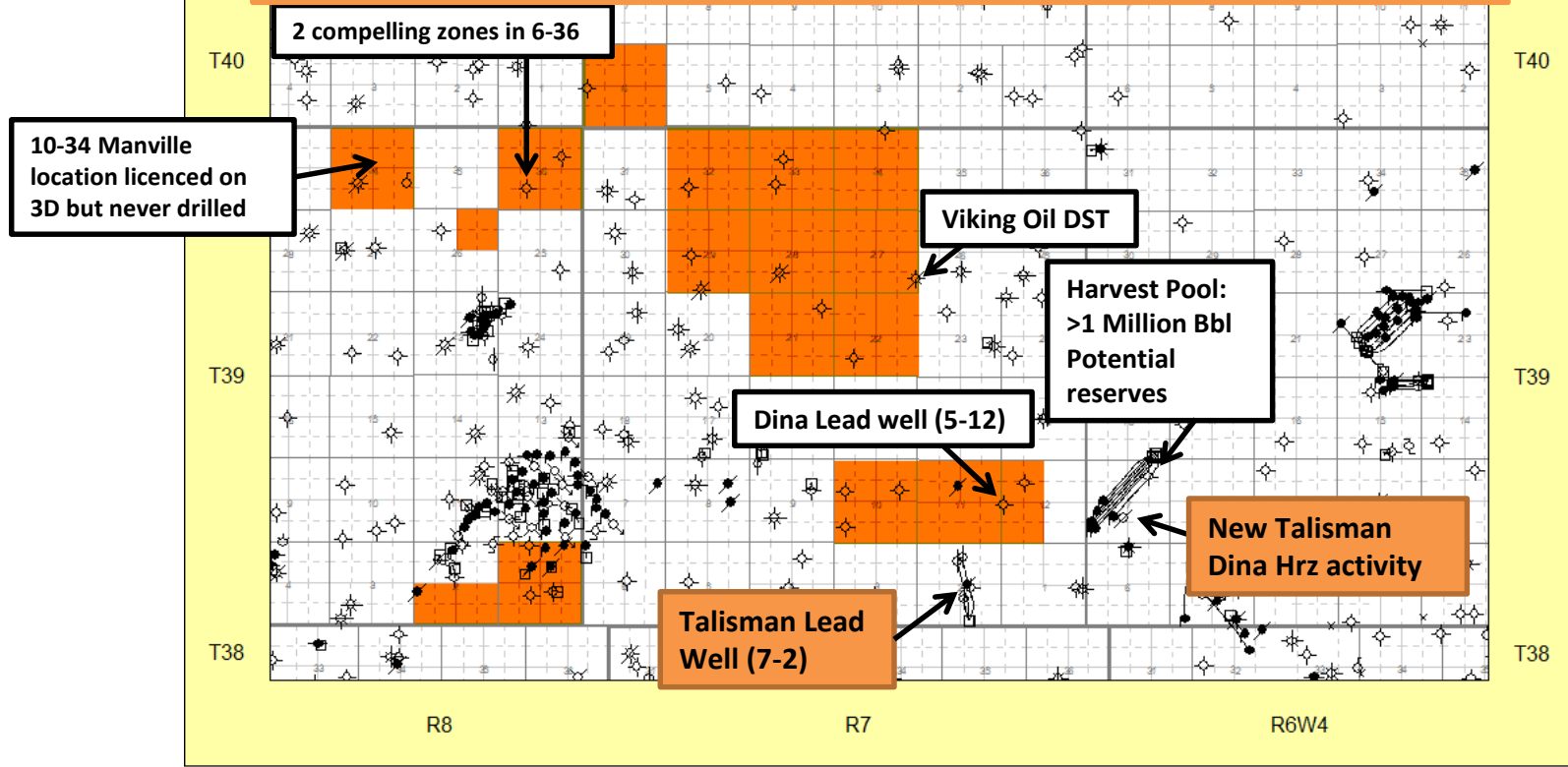
Ignite Energy and Power Search

Horseshoe Lake Mannville and Viking

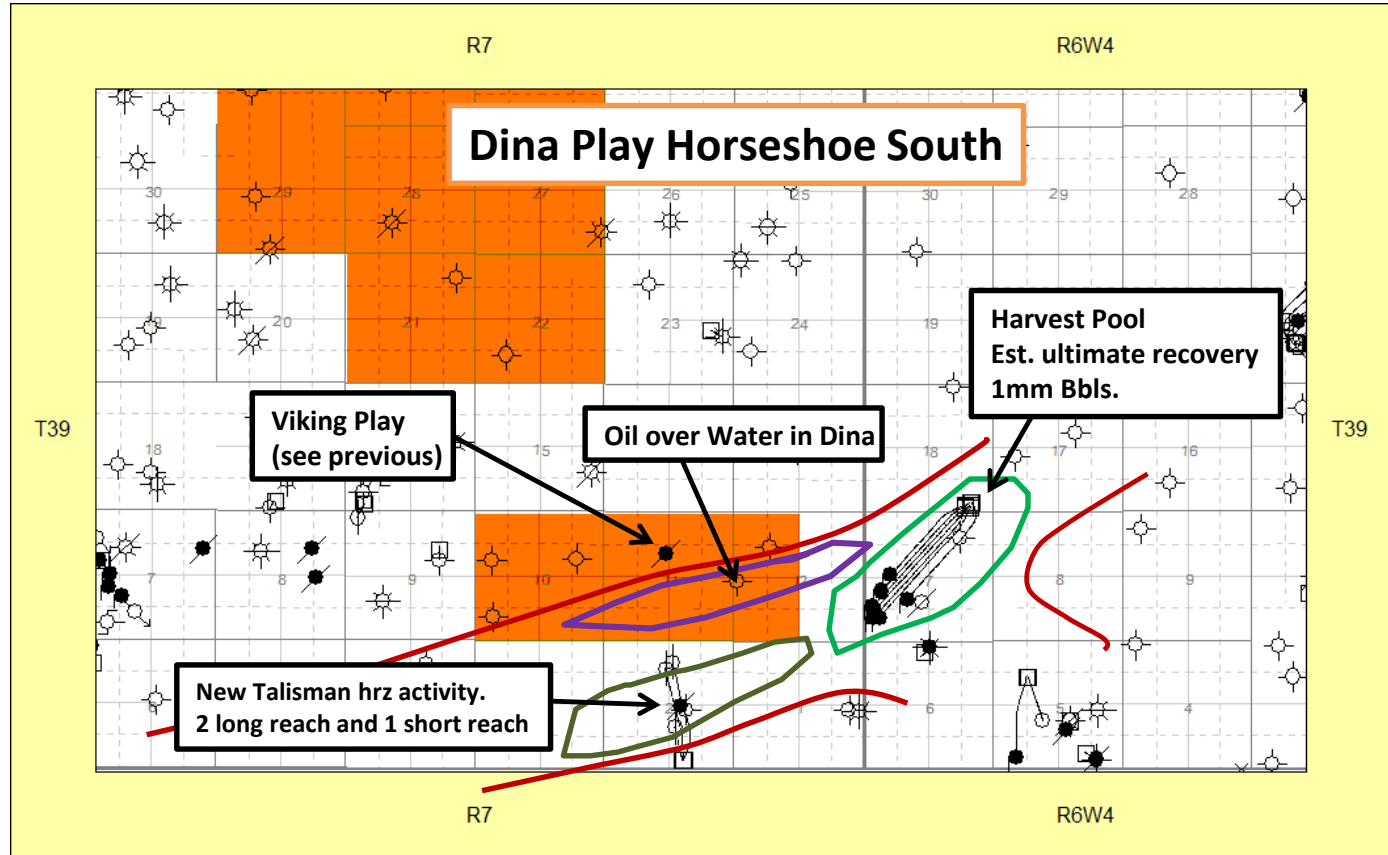
HORSESHOE LAKE MANNVILLE AND VIKING



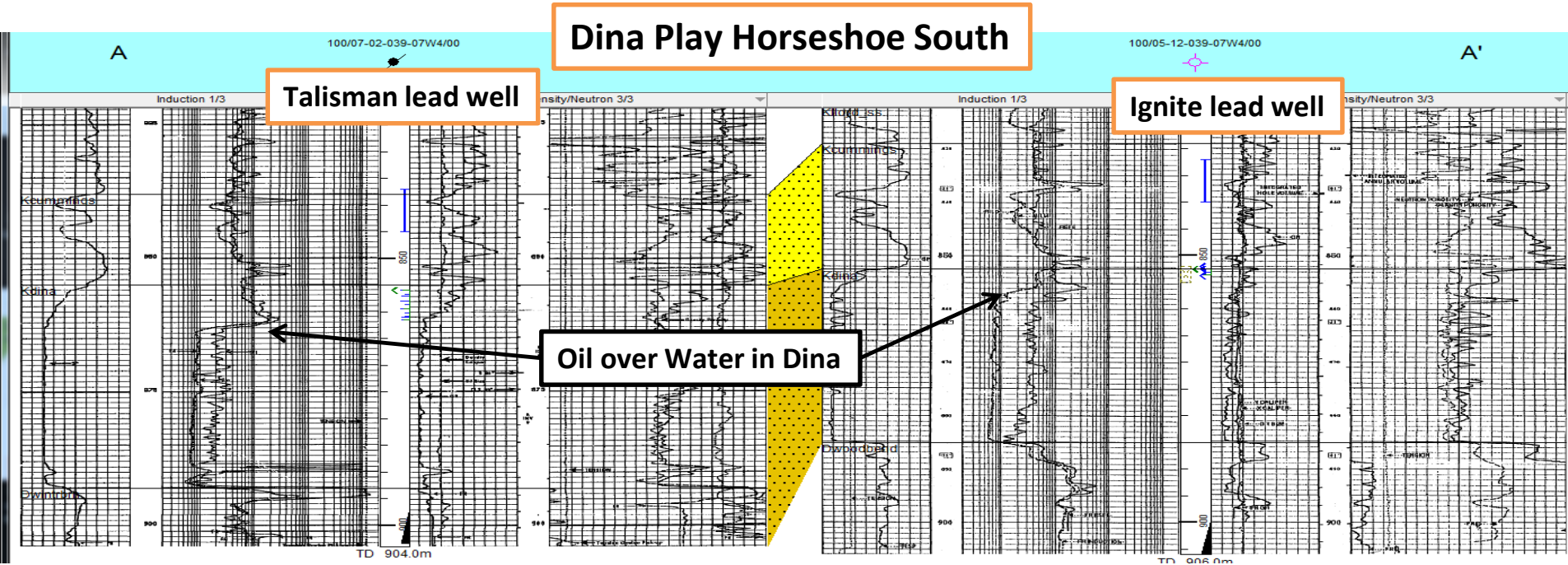
The Horseshoe Lake core area consists of a large land base and multiple horizons, including Mannville and Viking Resource Locations



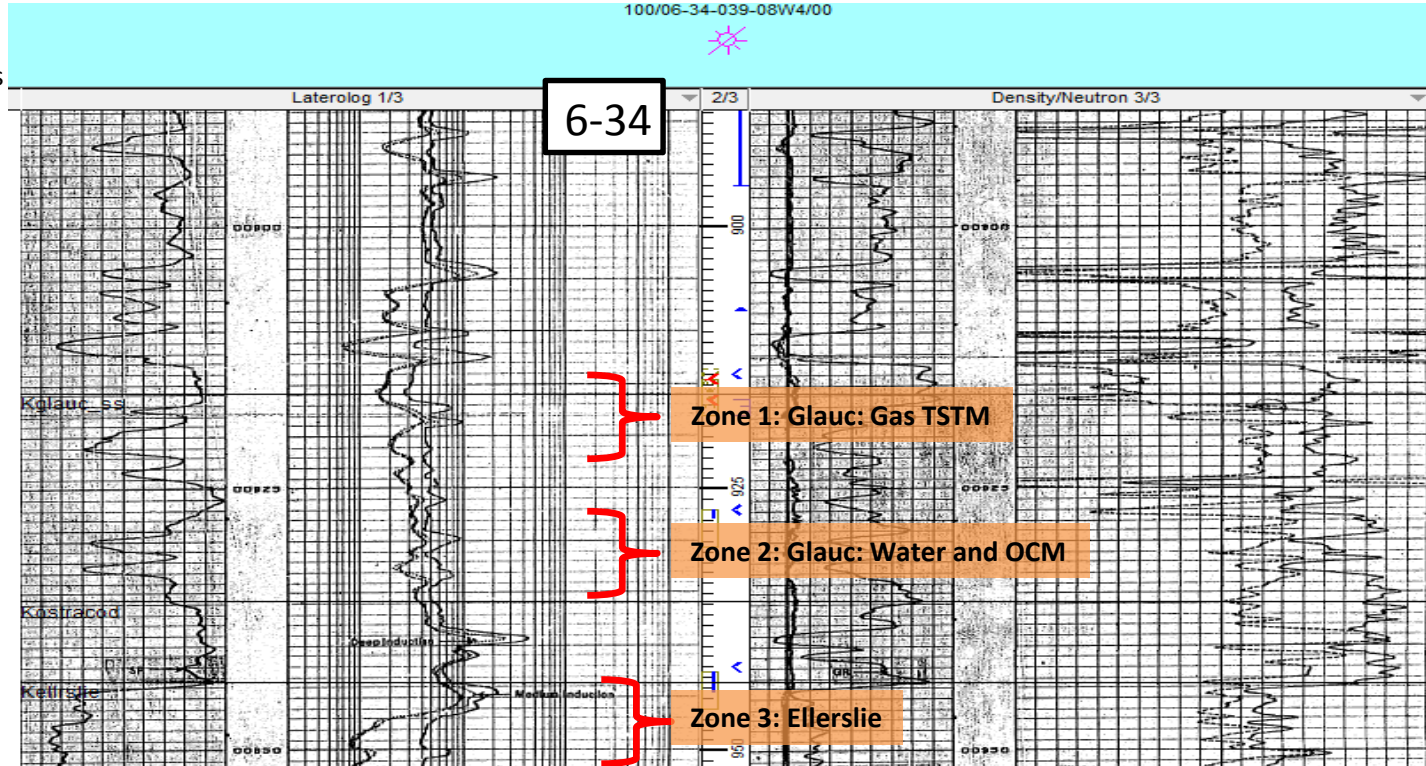
- Recent horizontal Dina development on offset land.
- Large block of Mannville and Viking rights.
- Lands offset Mannville pool estimated to produce 1mm bbls.
- Excellent project, for a large 3D.



- Cross Section from 7-2 (Talisman development) to 5-12 on Ignite/Power Search Lands.

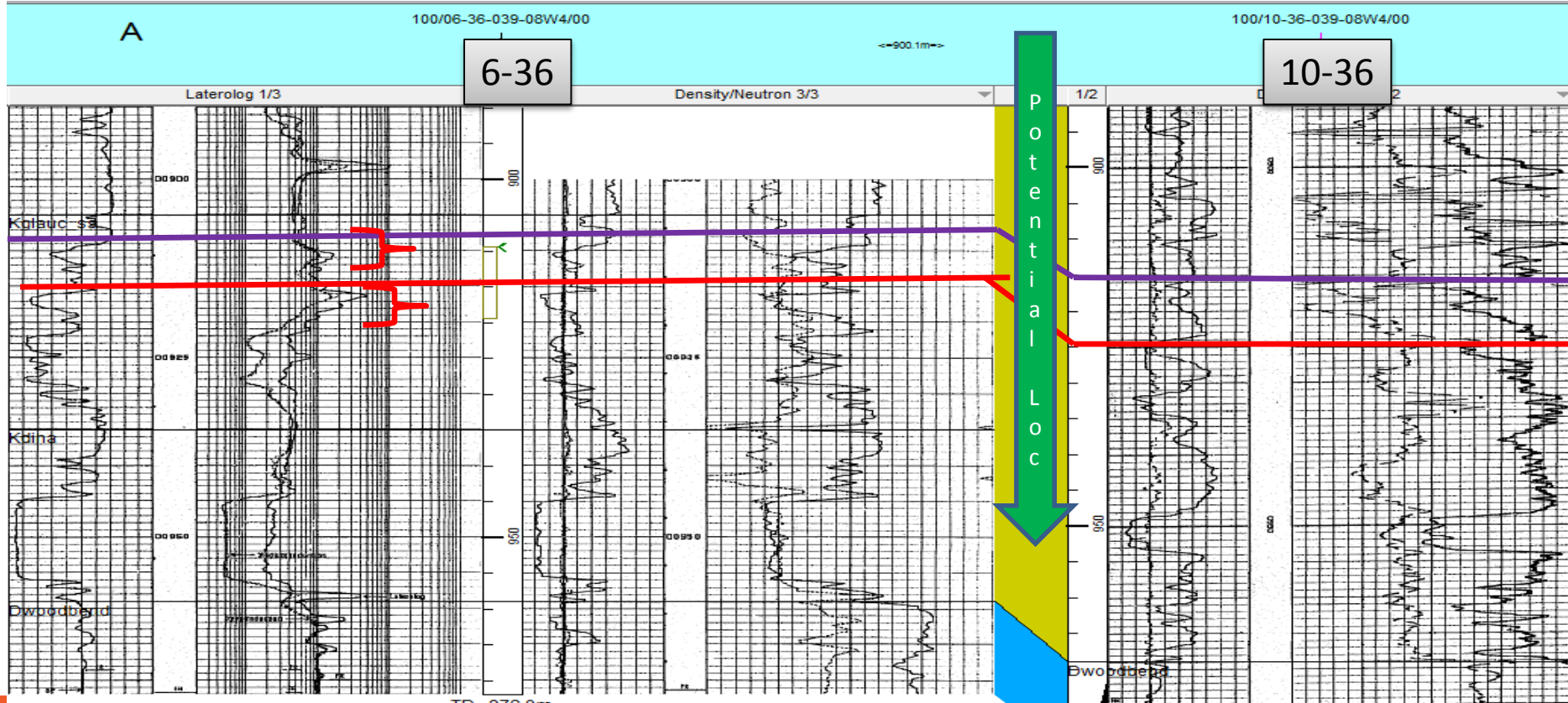


- 3 Compelling zones in this well.
- Originally a Viking Gas Producer.
- Requires additional Structure. Potential Hrz candidate in Ellerslie.

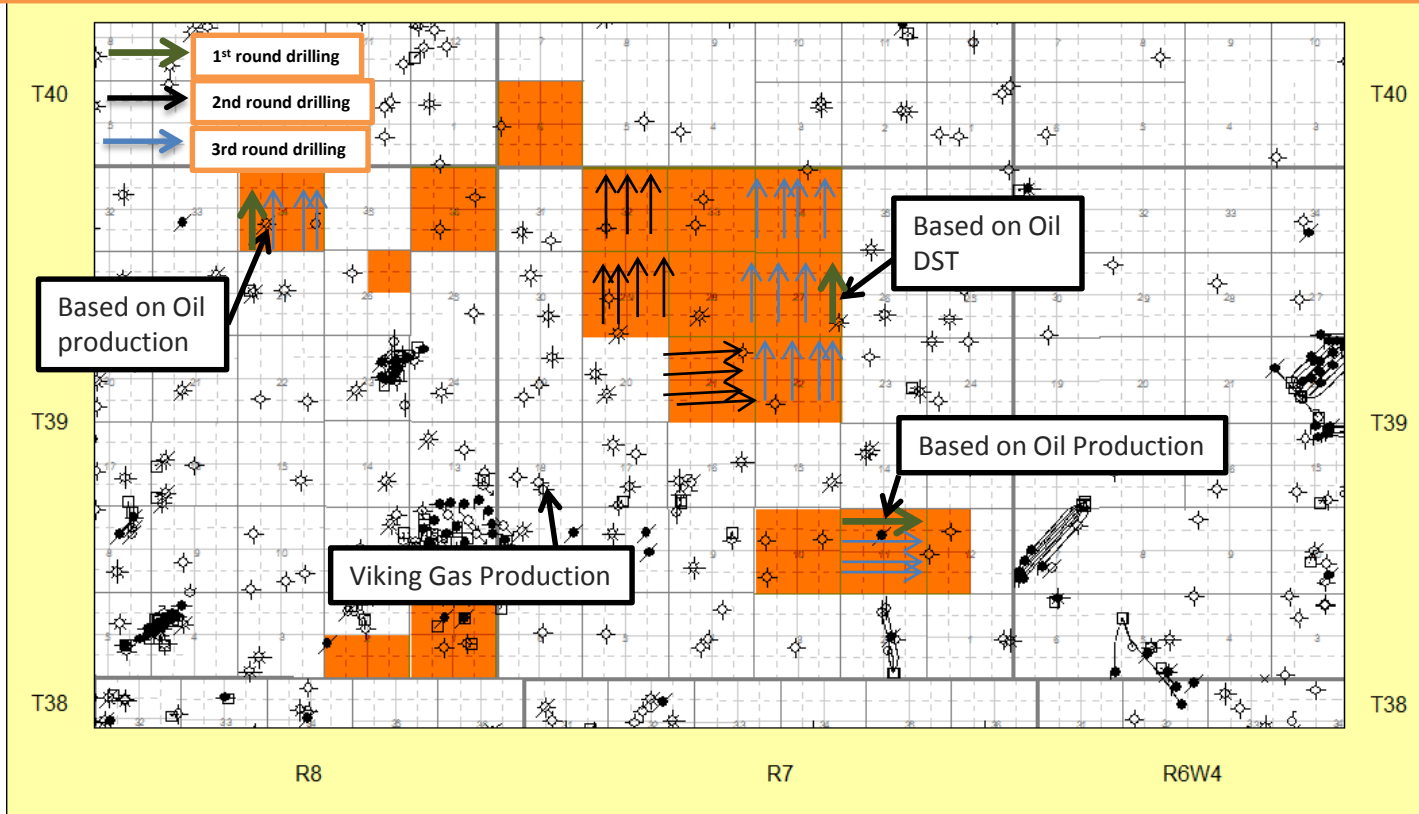


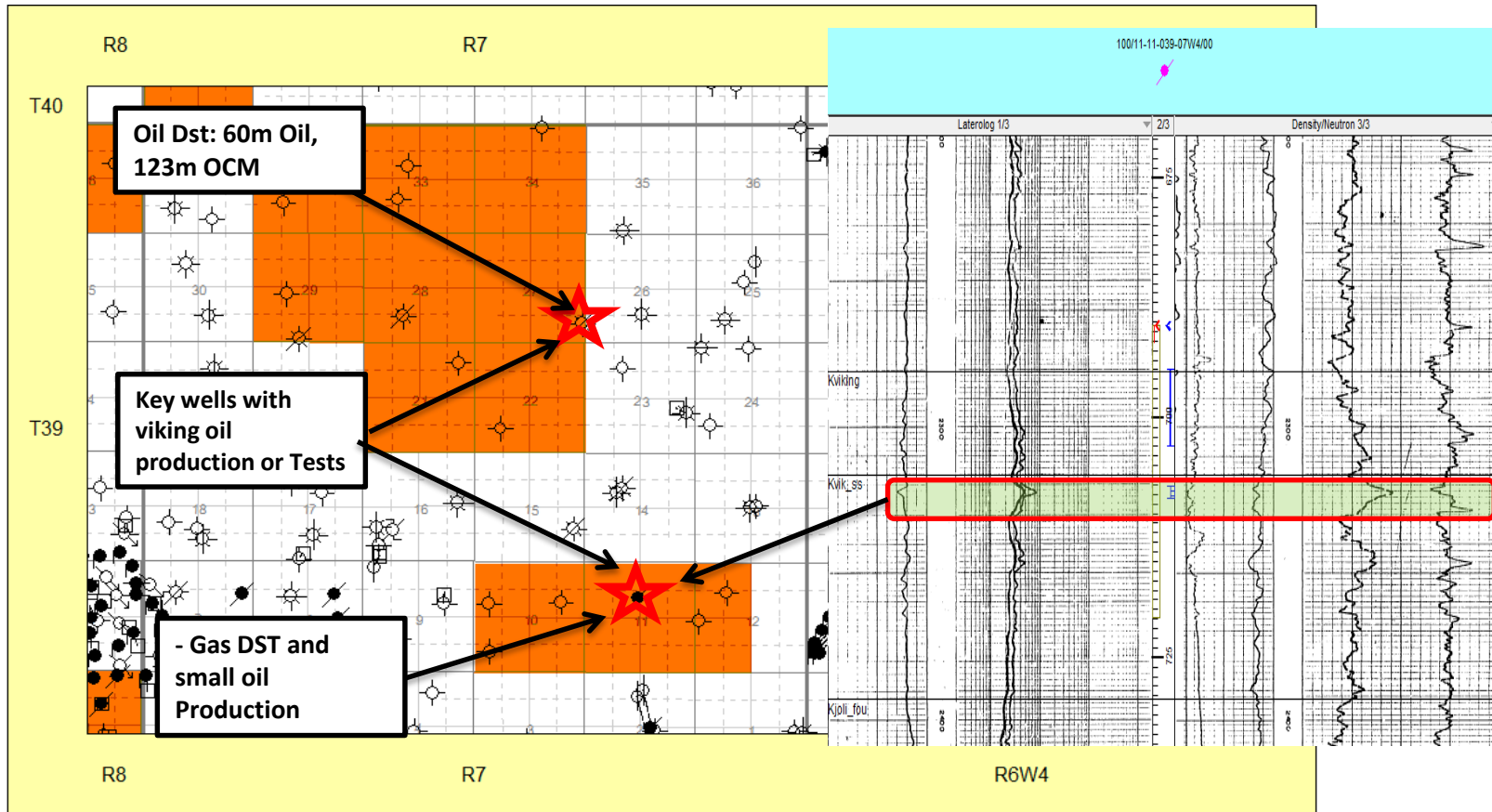
HORSESHOE LAKE NORTH MANNVILLE SEC 36

- 2 Compelling zones in this well.
- Requires additional Structure.

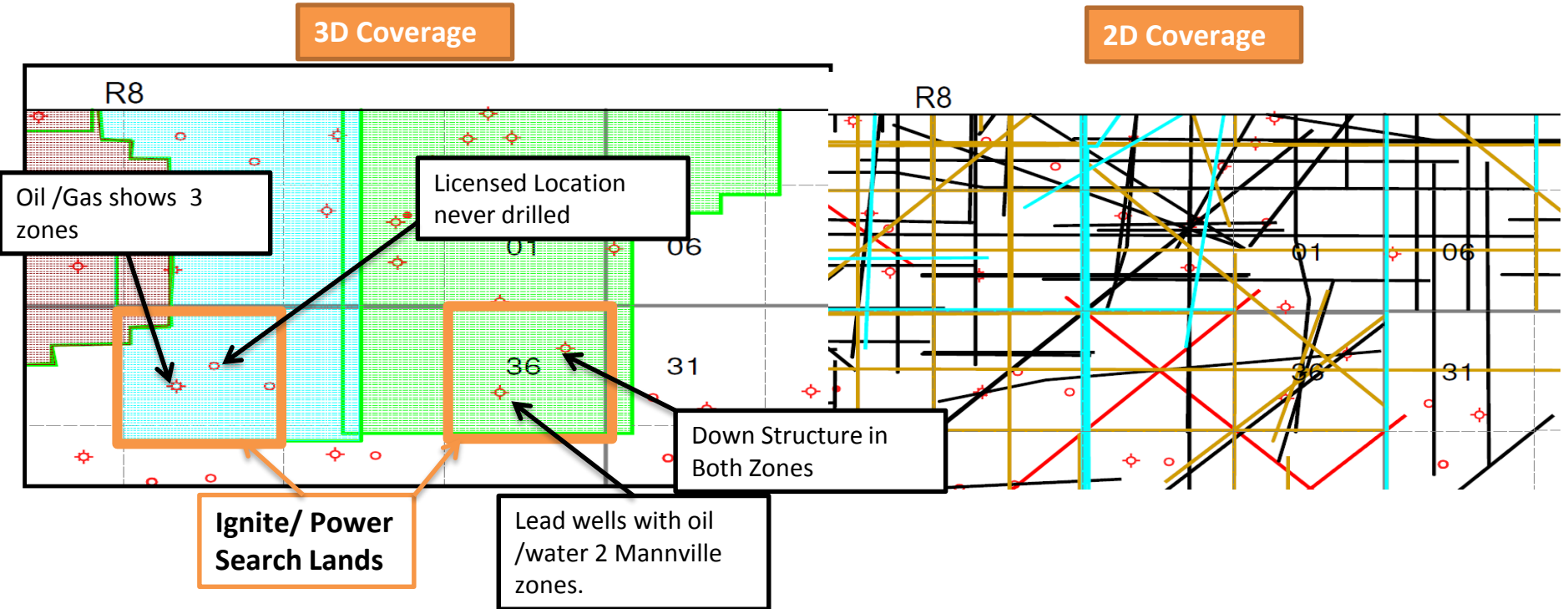


The Horseshoe Lake core area has the potential for a large hrz Viking development based on oil production and oil dsts.





- Trade 3D and 2D are available on the section
- 3D over each section is available for approximately \$30,000. It is very high quality
- Location was licensed at approximately 10-34 but never drilled

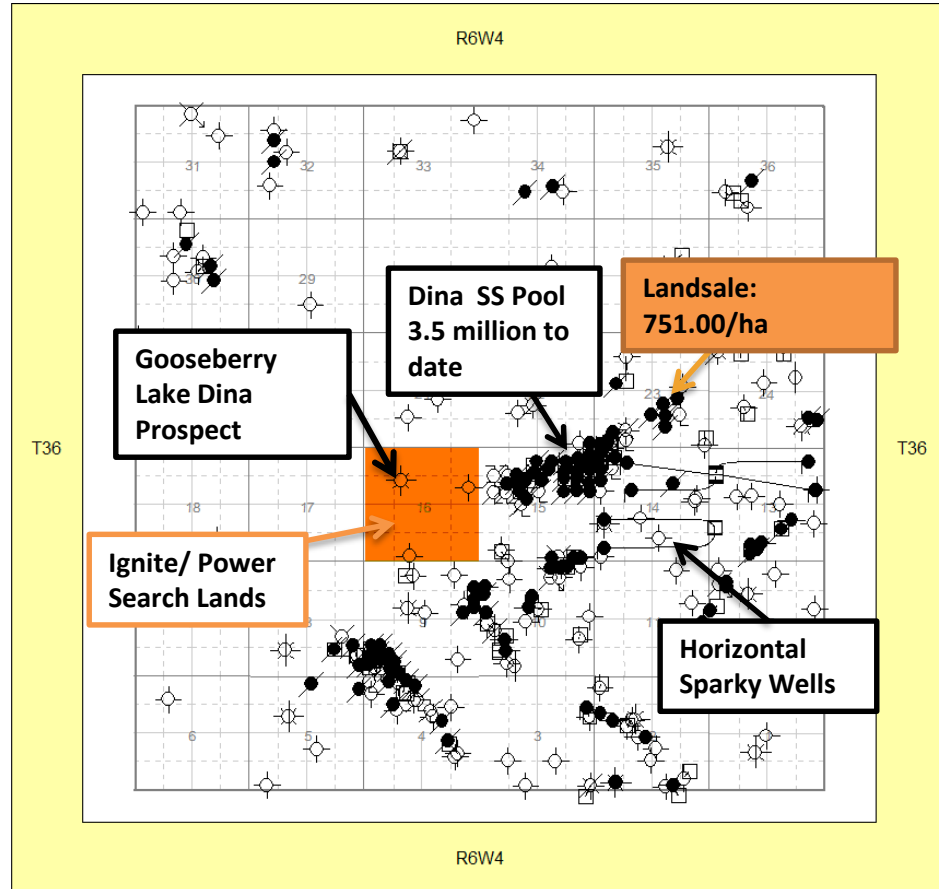


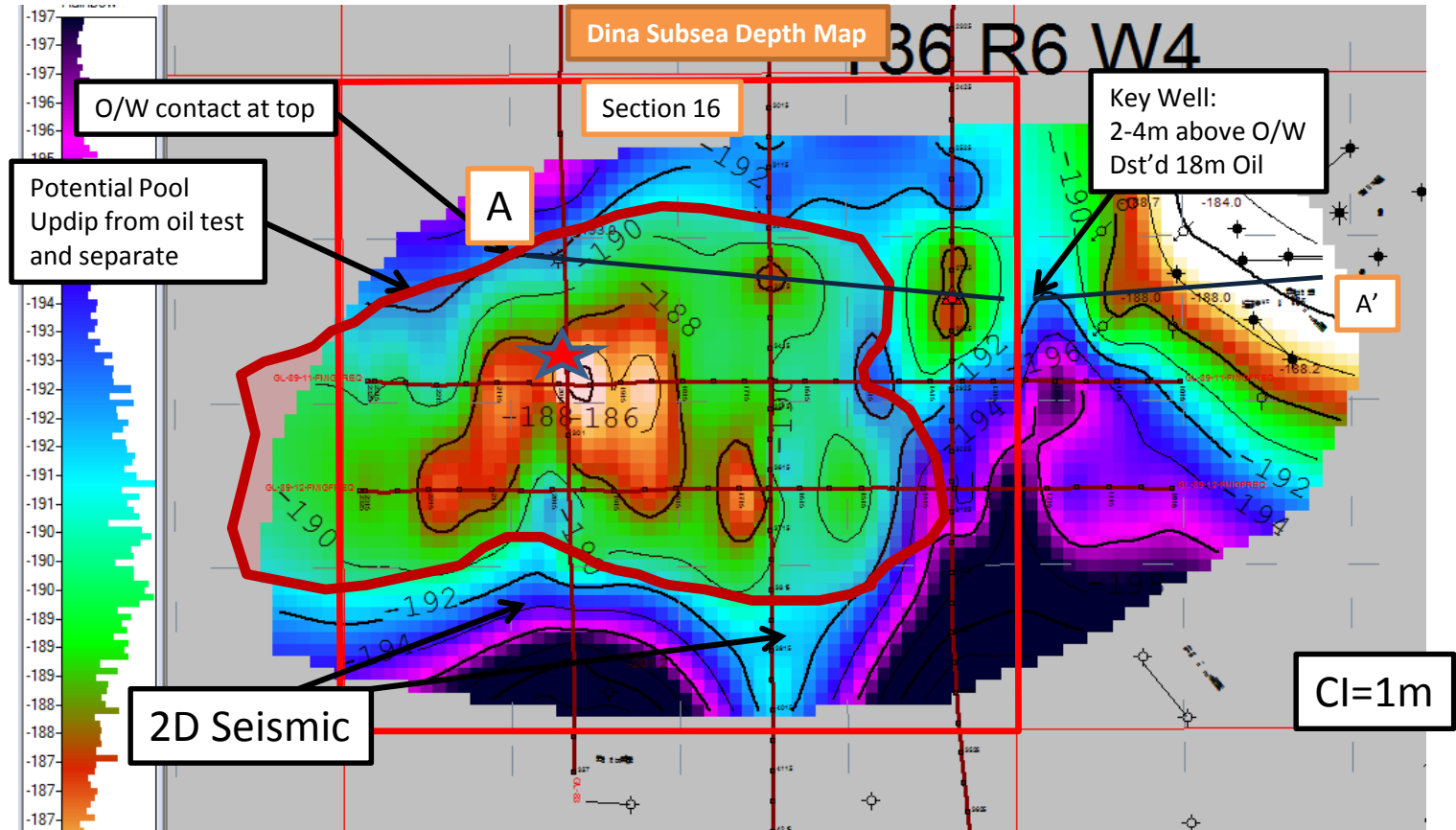


Ignite Energy and Power Search

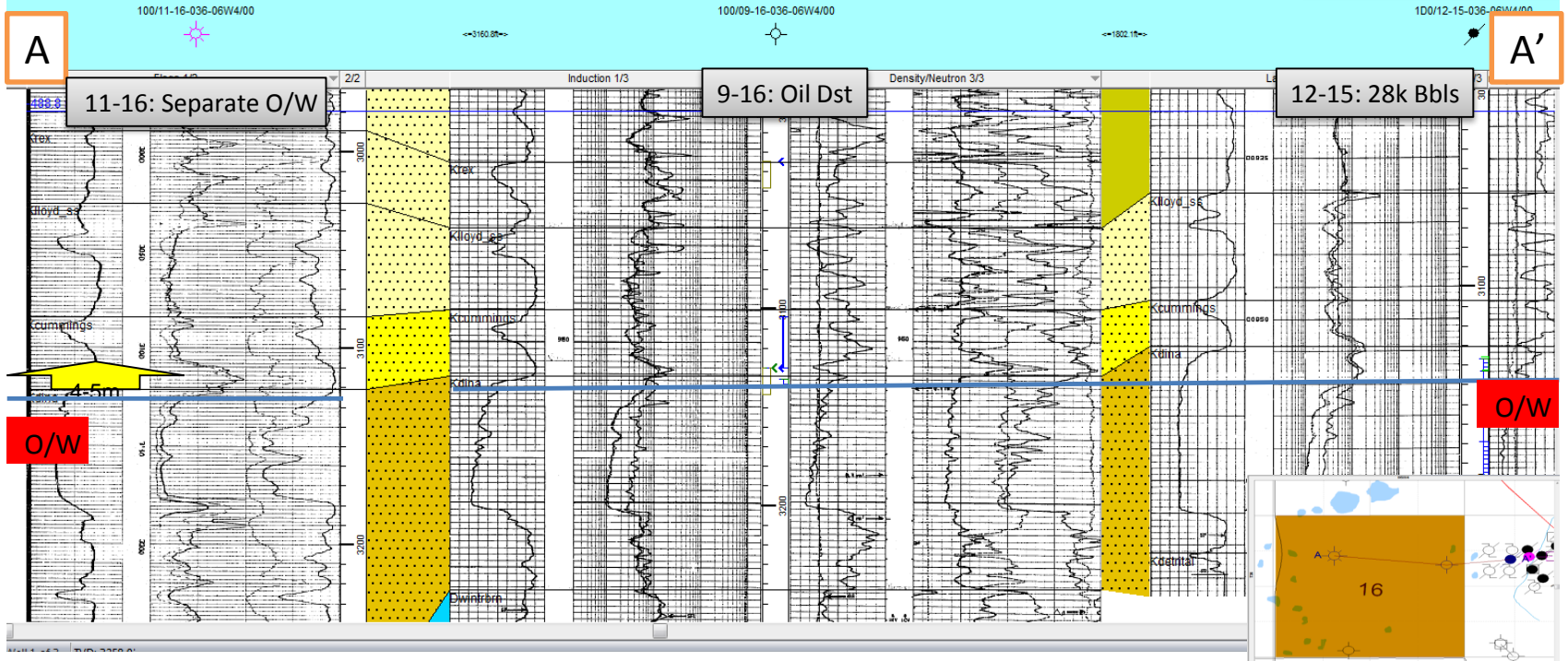
Provost Ellerslie/Dina Prospect

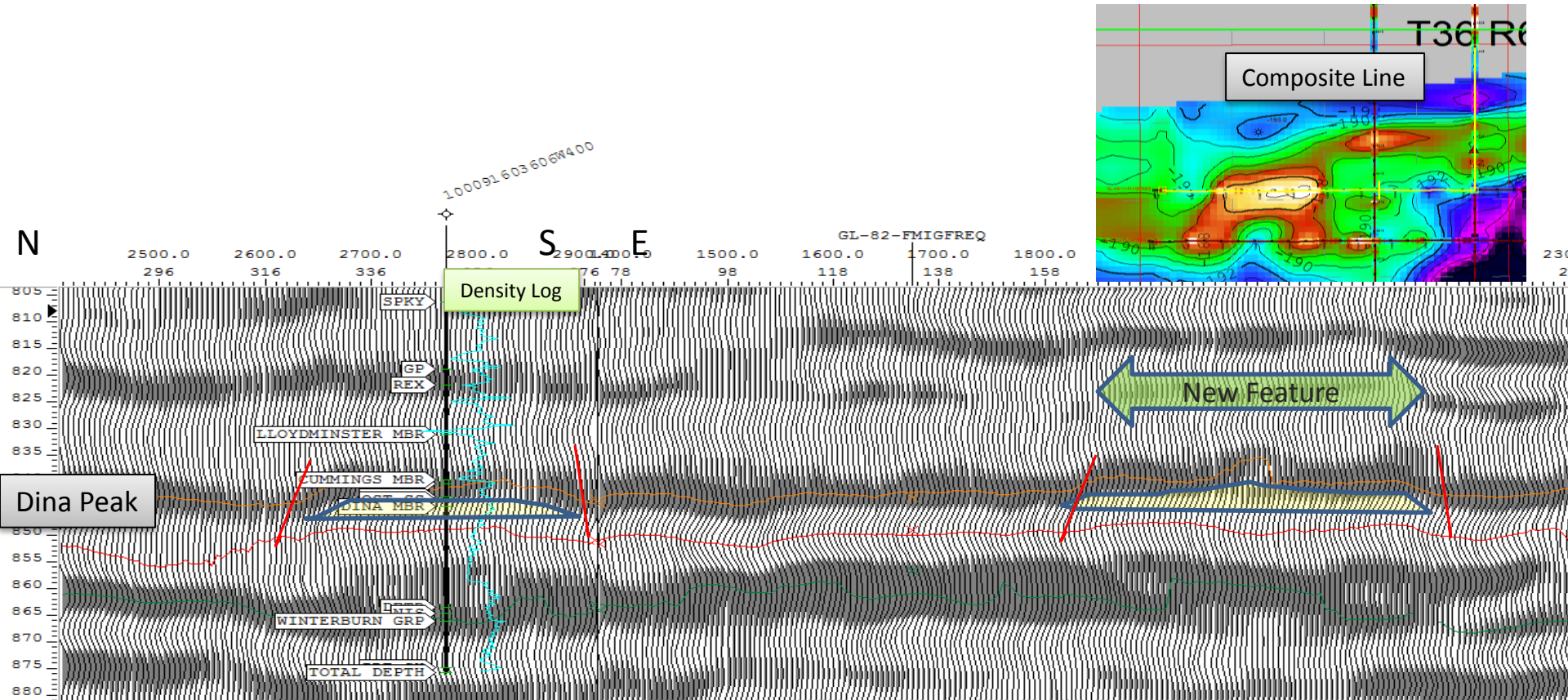
- Upside of >600,000 Bbls on established Dina/Ellerslie trend. Isolated highs exist along channel.
- Offsets existing 3.5mm bbl Dina pool along Mannville channel.
- Multi-zone potential, for Rex, sparky and Viking oil.
- Ready to drill prospect on recently reprocessed 2D seismic



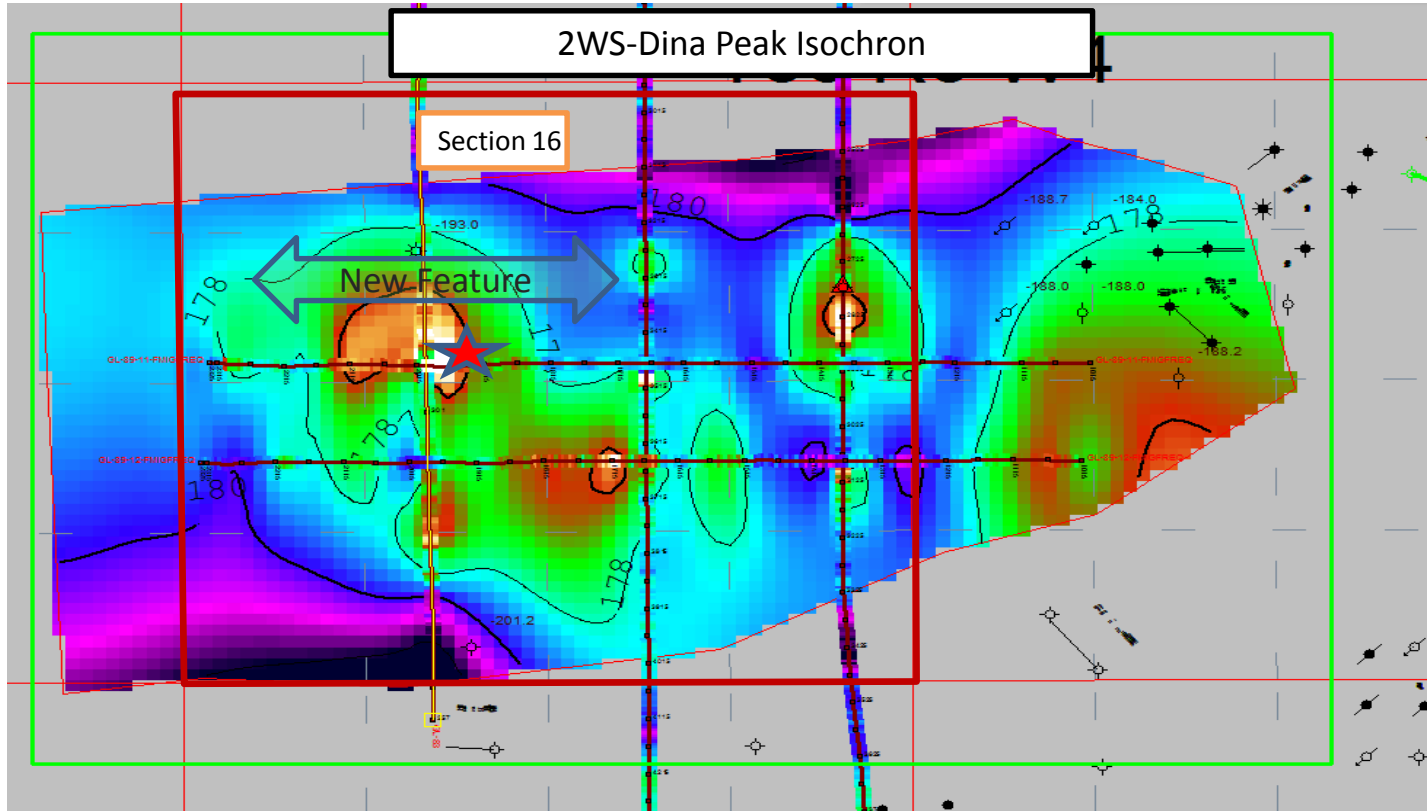


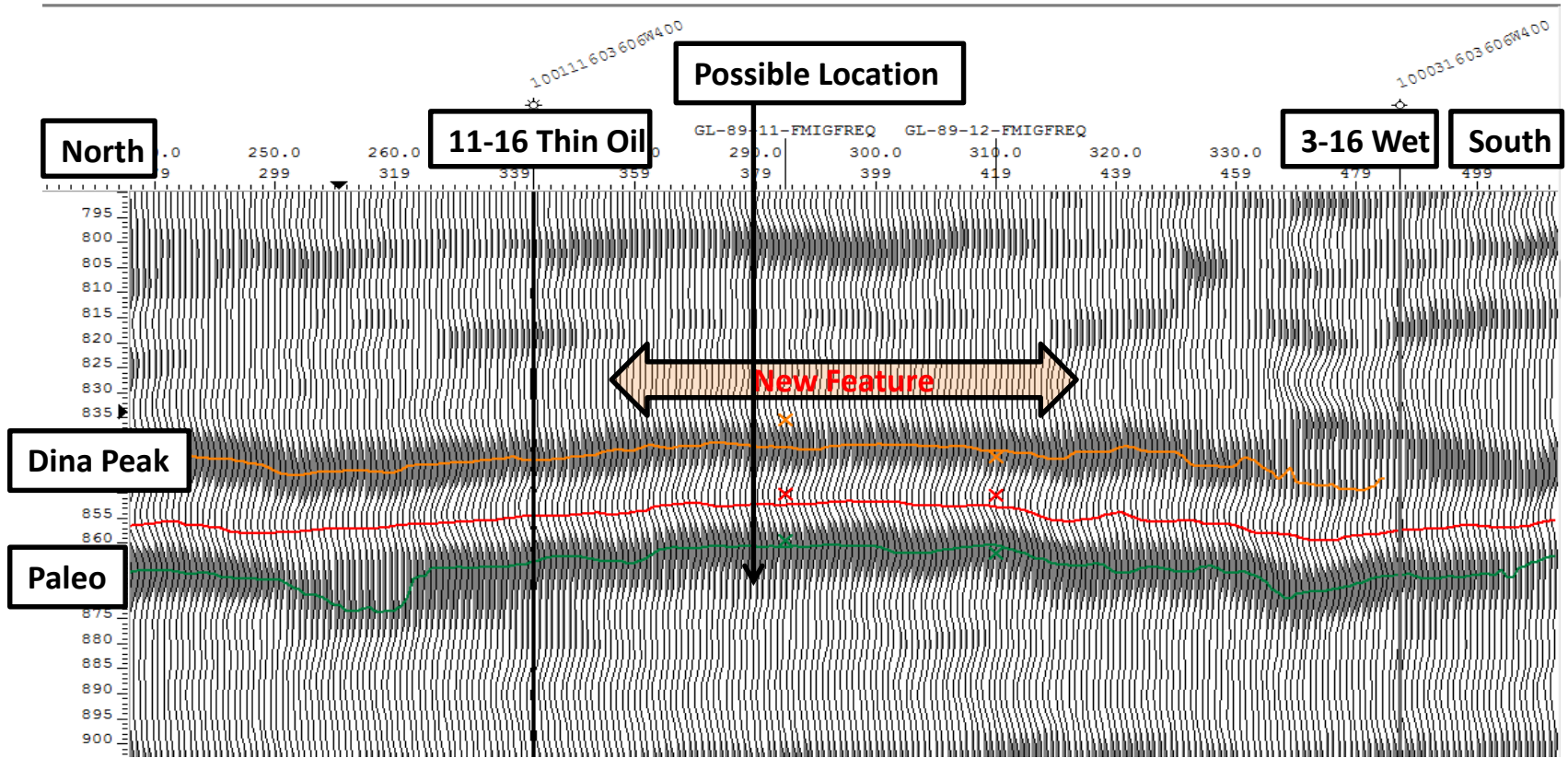
11-16 has a separate O/W contact, implying the Prospect is separate from the updip pool. Even if the O/W contact is the same, the seismic indicates a large potential pool. Additional Mannville sands are also present and may be trapped over high.



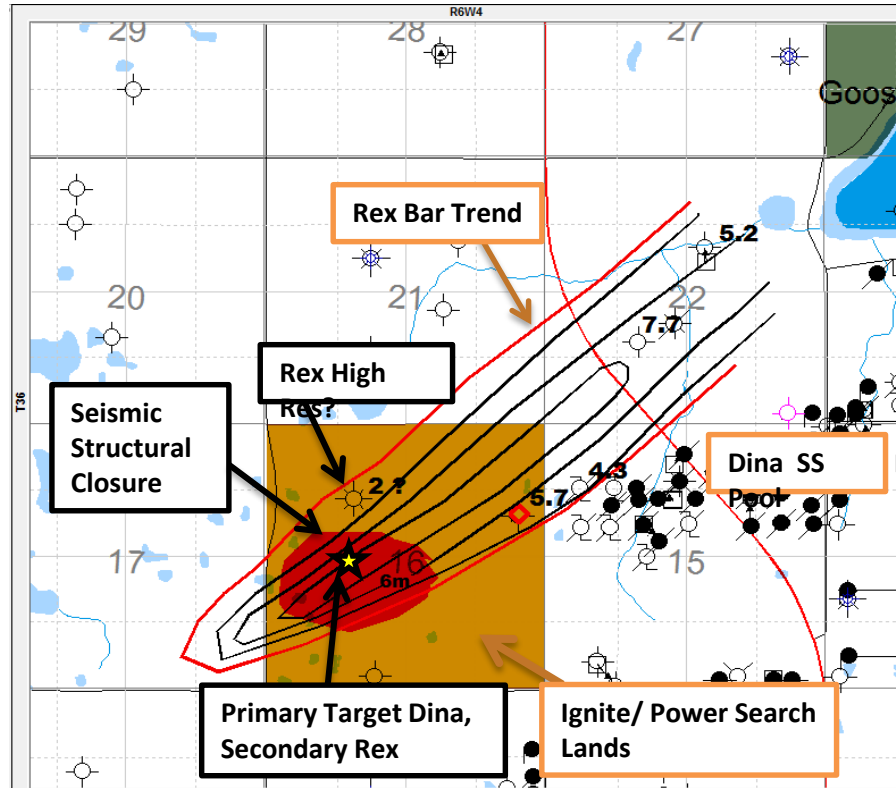


The 2ws-Dina Peak Isochron confirms the prospect and emphasizes the potential separation from the 9-16 well

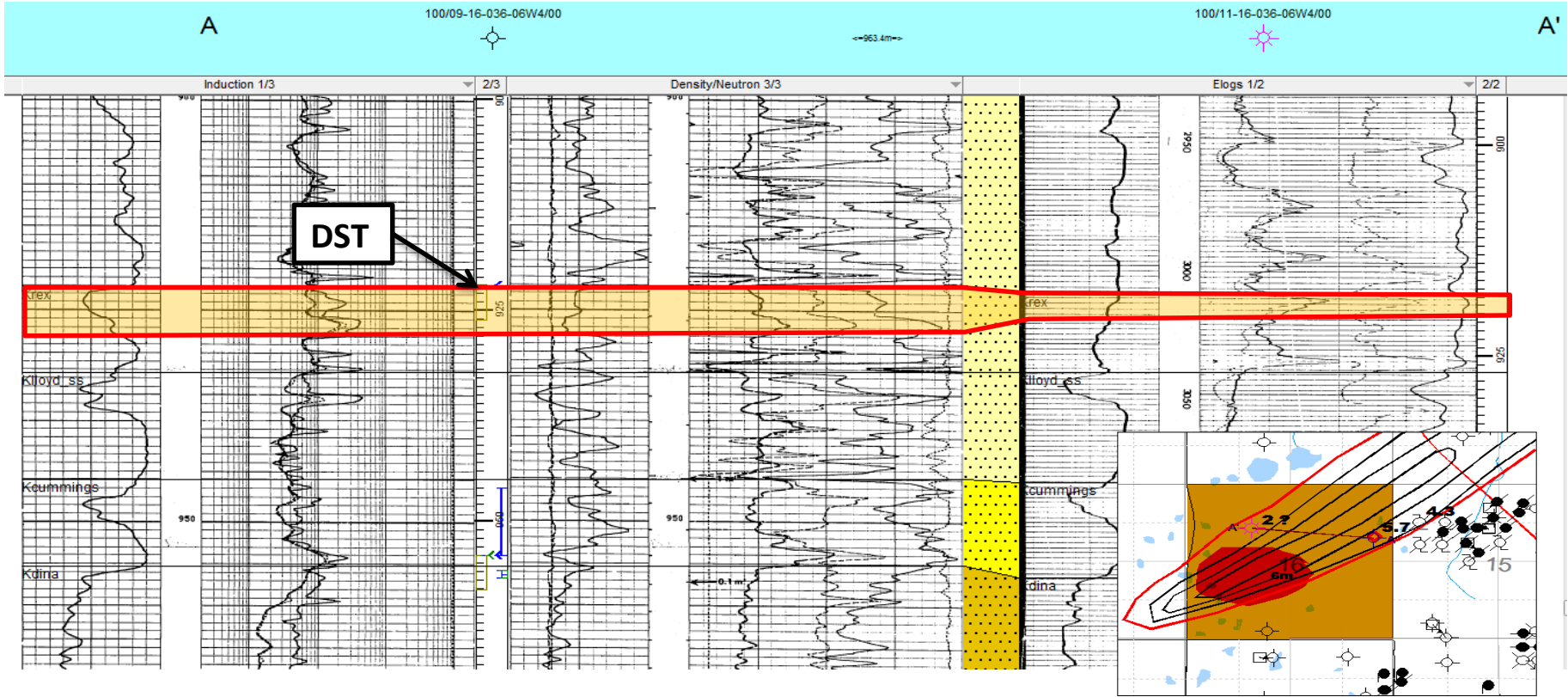




In addition to the Dina play, the structural closure on the new seismic also potentially traps a thick Rex sand that had a poor DST at 9-16.



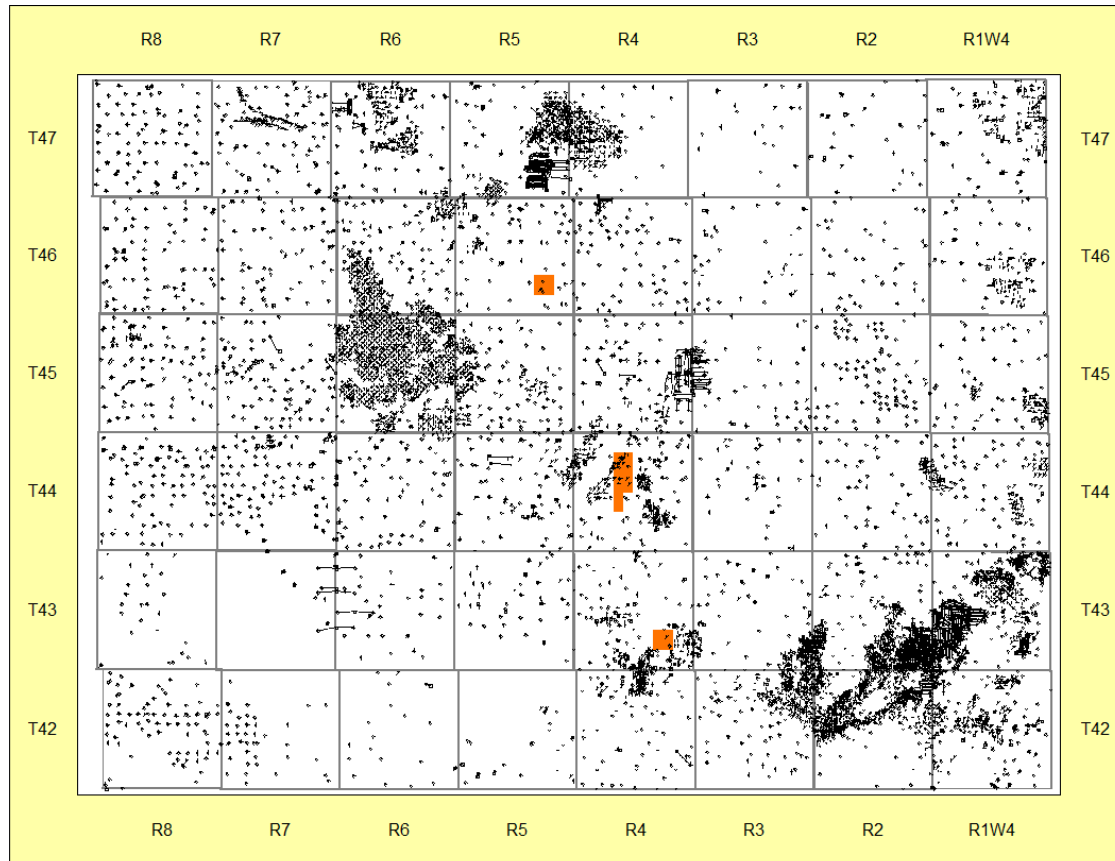
PROVOST REX CROSS SECTION



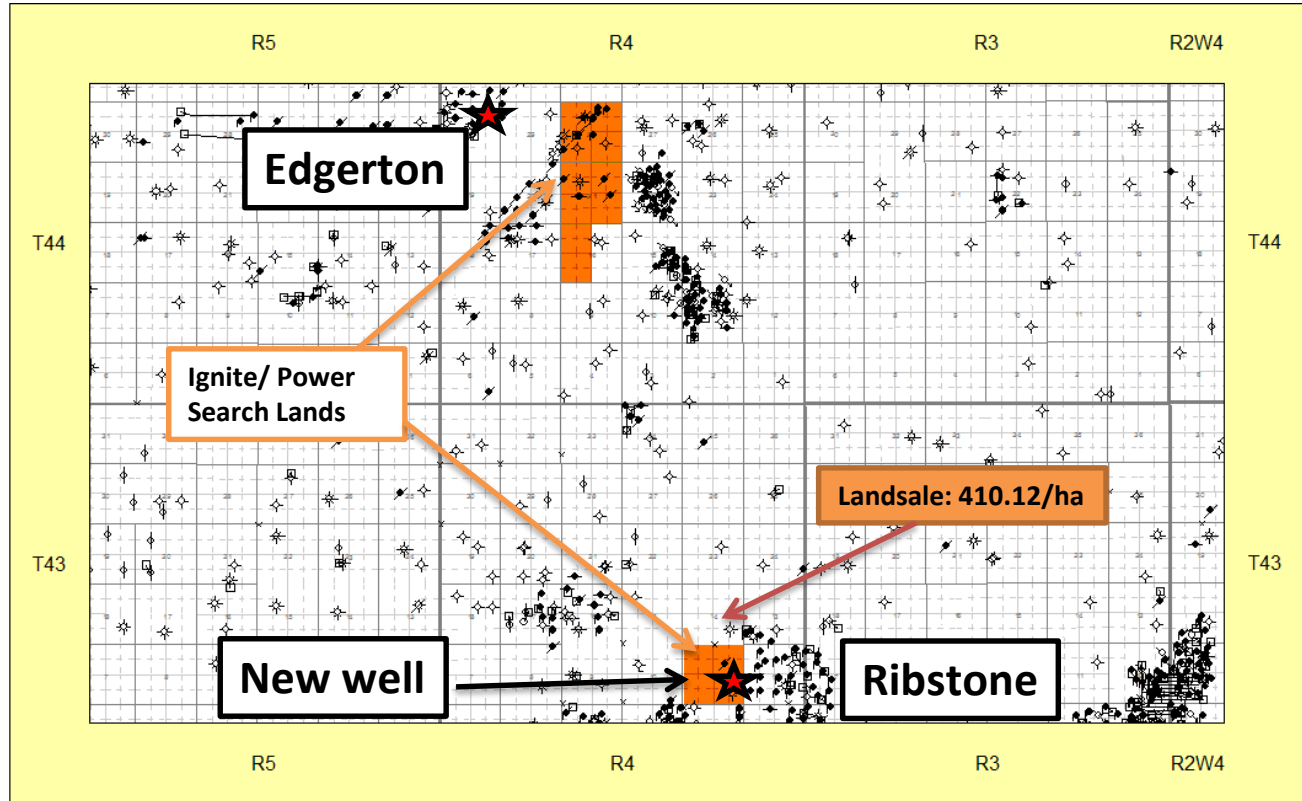


Ignite Energy and Power Search

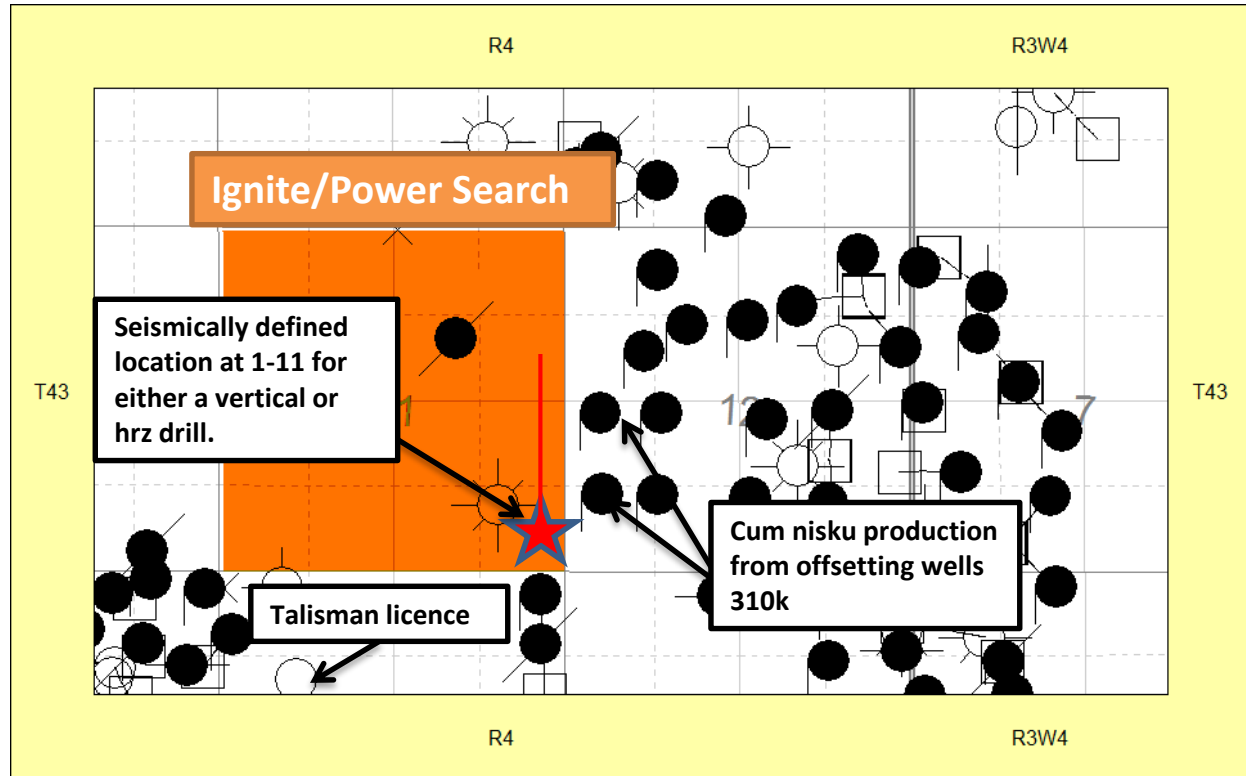
Ribstone/Edgerton

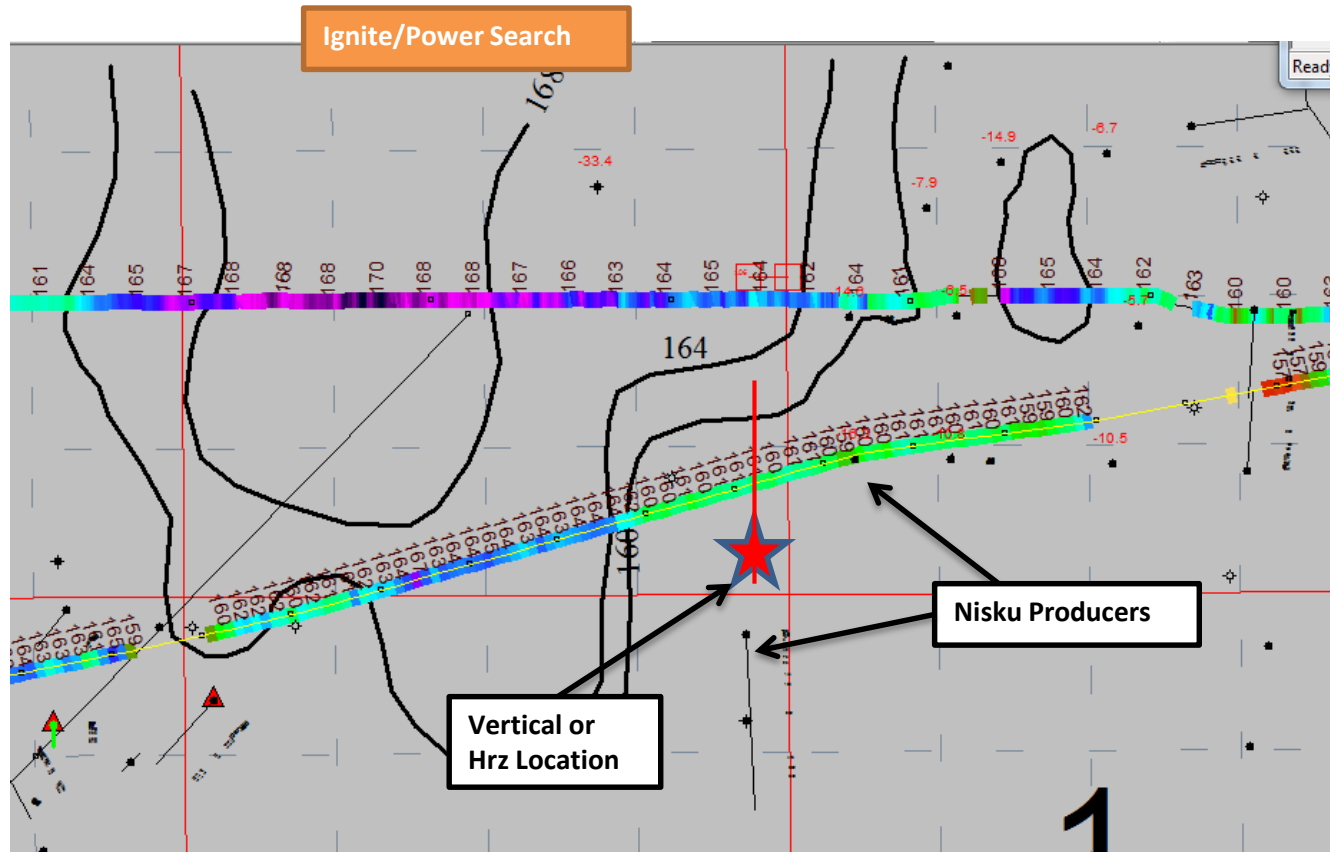


- Potential Nisku Hrз or Vertical location in Ribstone, seismically defined.
- Potential Nisku Hrз Location in Edgerton, probably requires seismic
- 3 New wells licensed in Edgerton and Ribstone



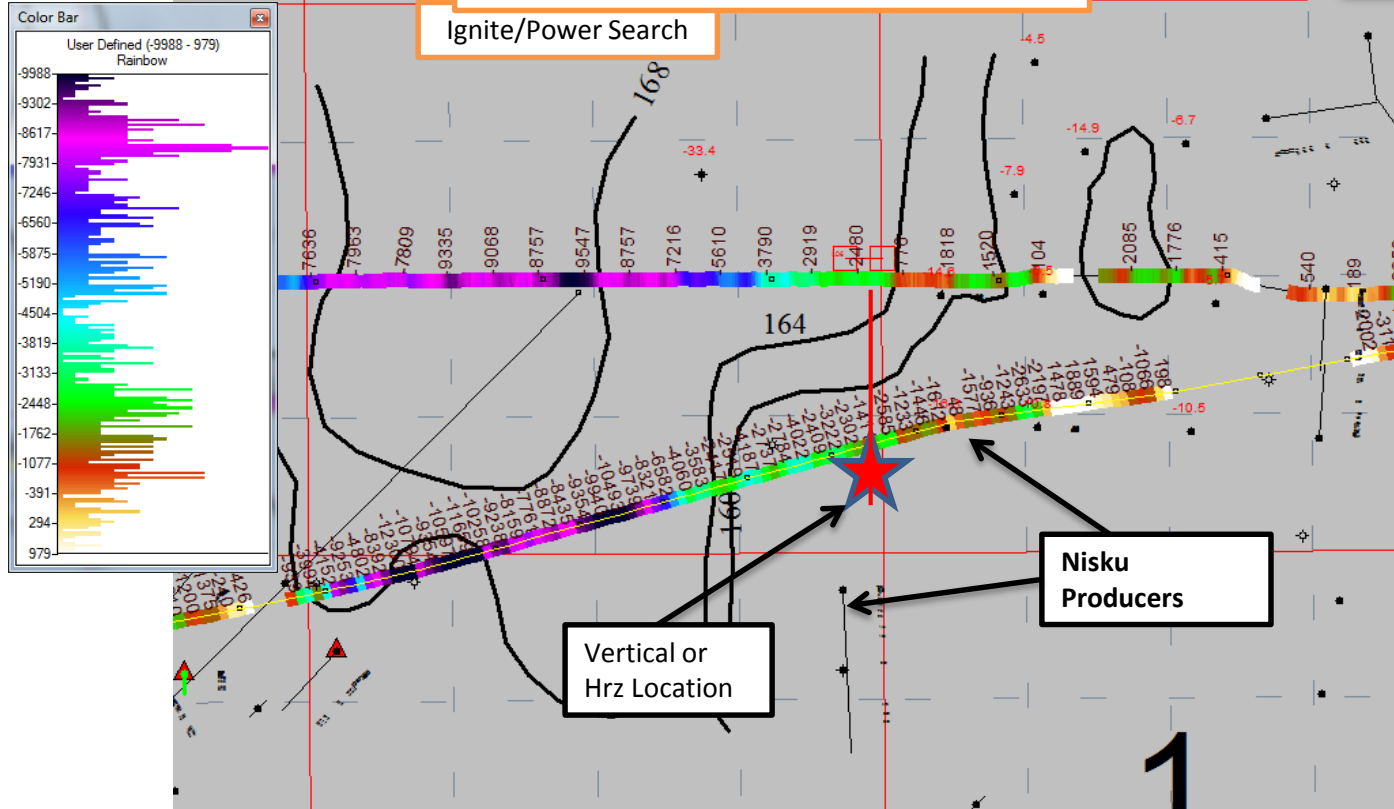
- Potential Nisku Hrzs or Vertical location in Ribstone, seismically defined.
- Over 310K bbls produced from 2 offsetting wells as of to date.
- South east quarter has been downspaced previously by Talisman.
- 3D over entire section 11 exists, but has been made unavailable by Talisman.





Sparky Amp with 2ws-Nisku Contours

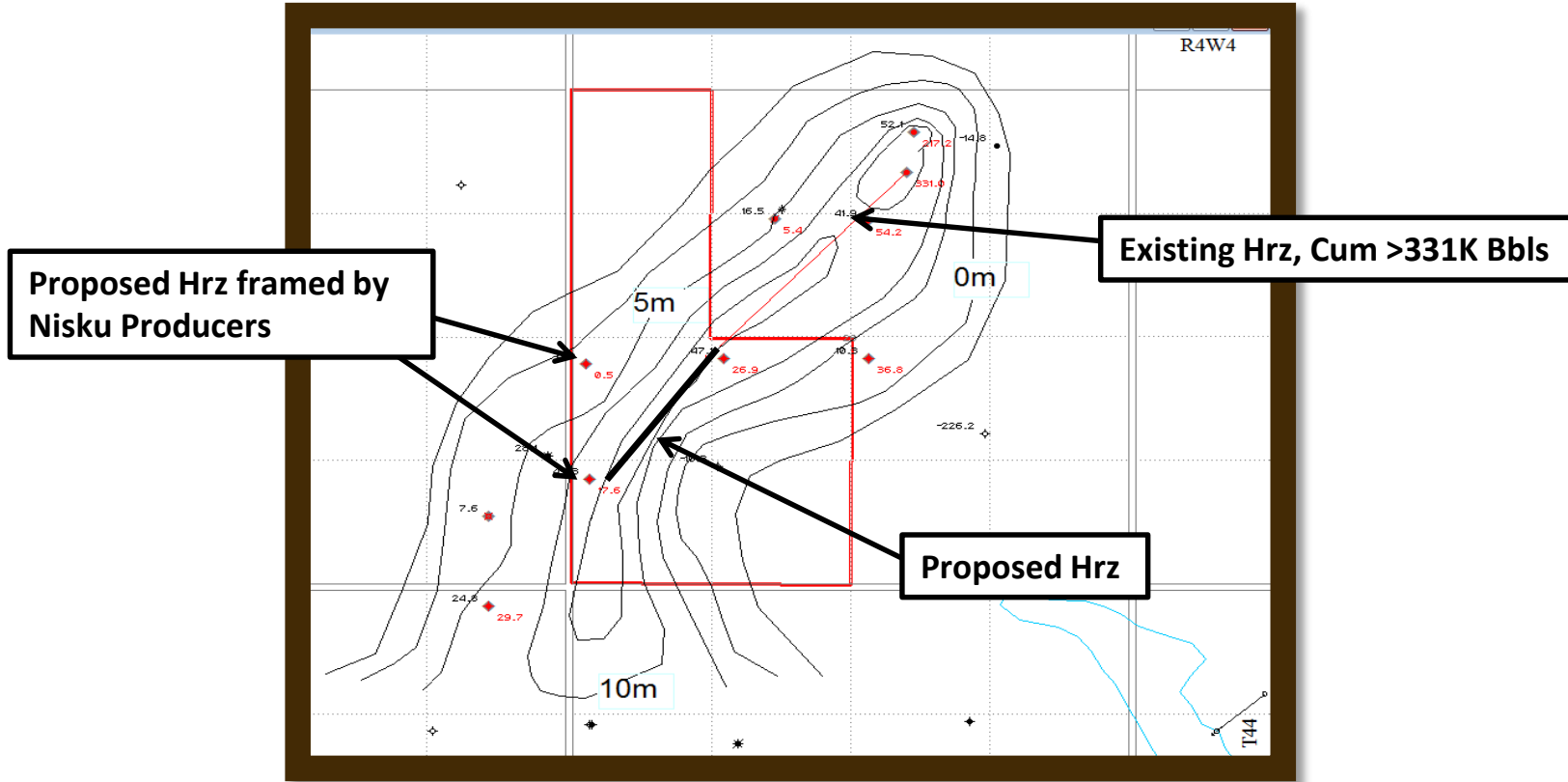
Ignite/Power Search



Vertical or
Hrz Location

Nisku
Producers

- Offsets existing Hrzs that has produced over 331,000 Bbls

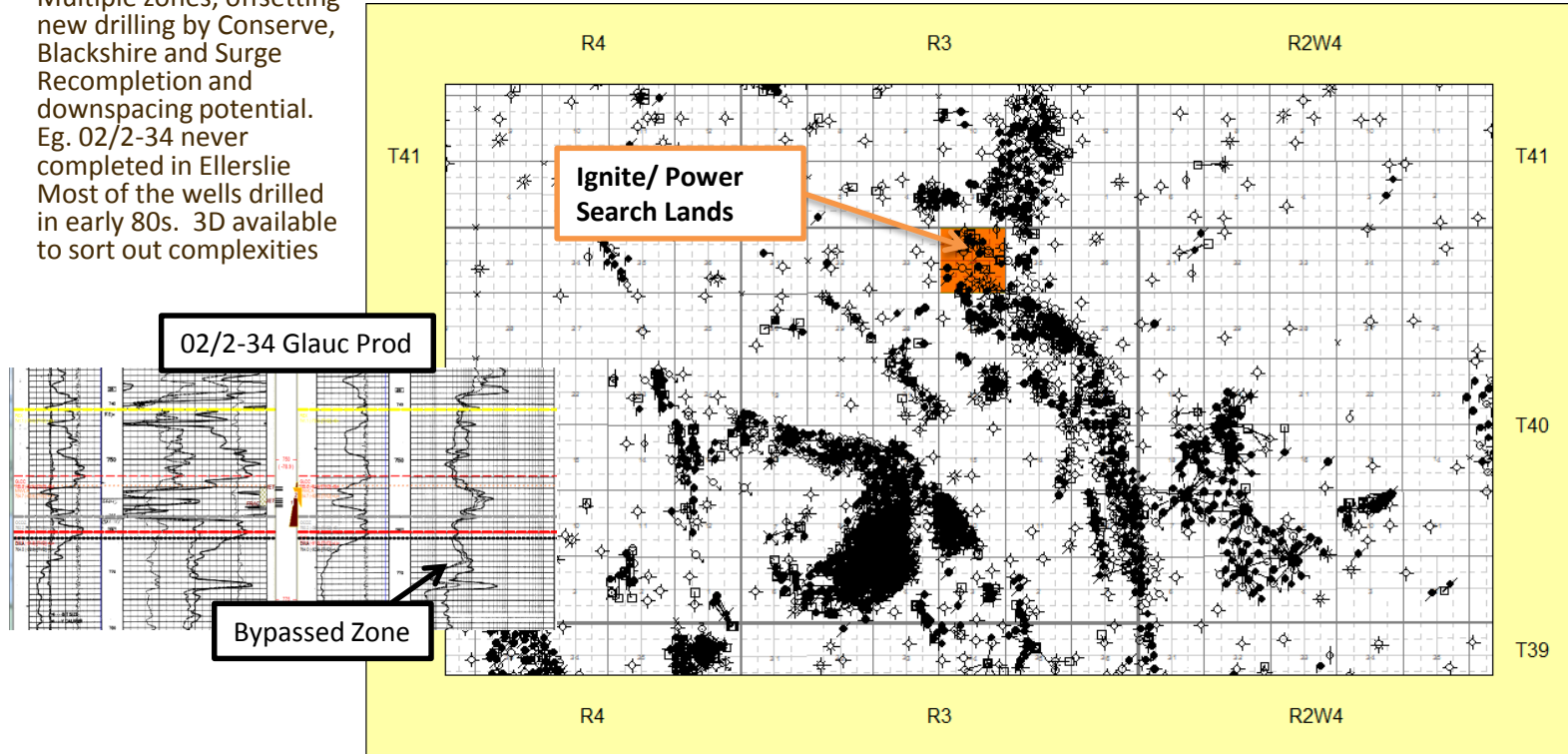


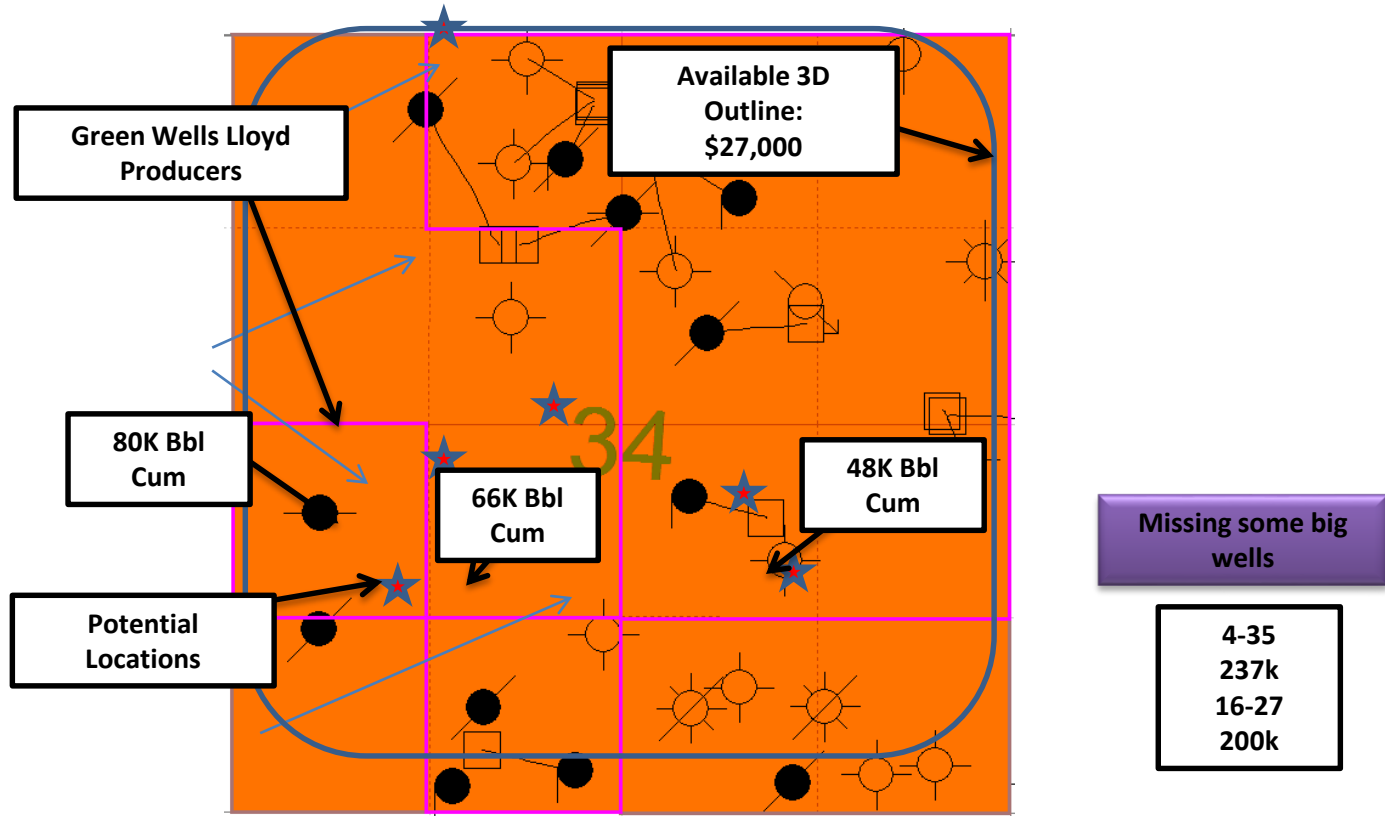


Ignite Energy and Power Search

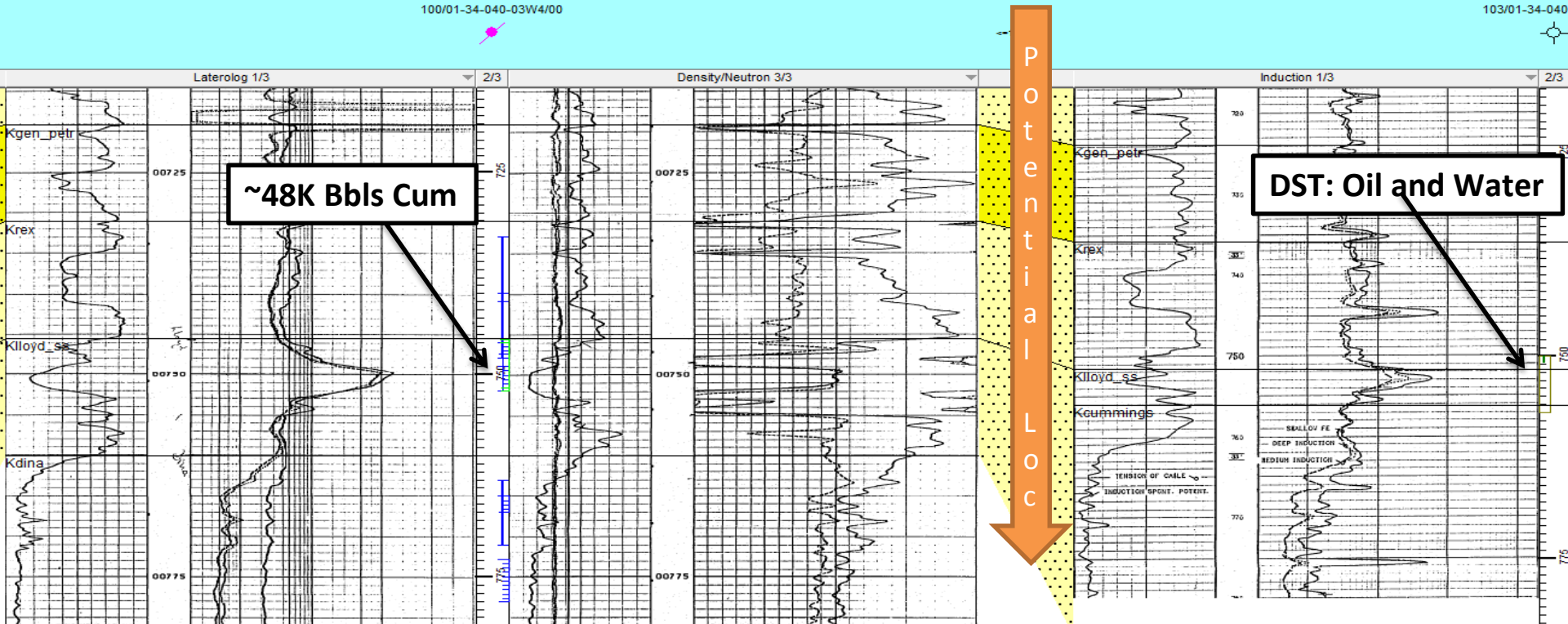
David

- Multiple zones, offsetting new drilling by Conserve, Blackshire and Surge
- Recompletion and downspacing potential. Eg. 02/2-34 never completed in Ellerslie
- Most of the wells drilled in early 80s. 3D available to sort out complexities





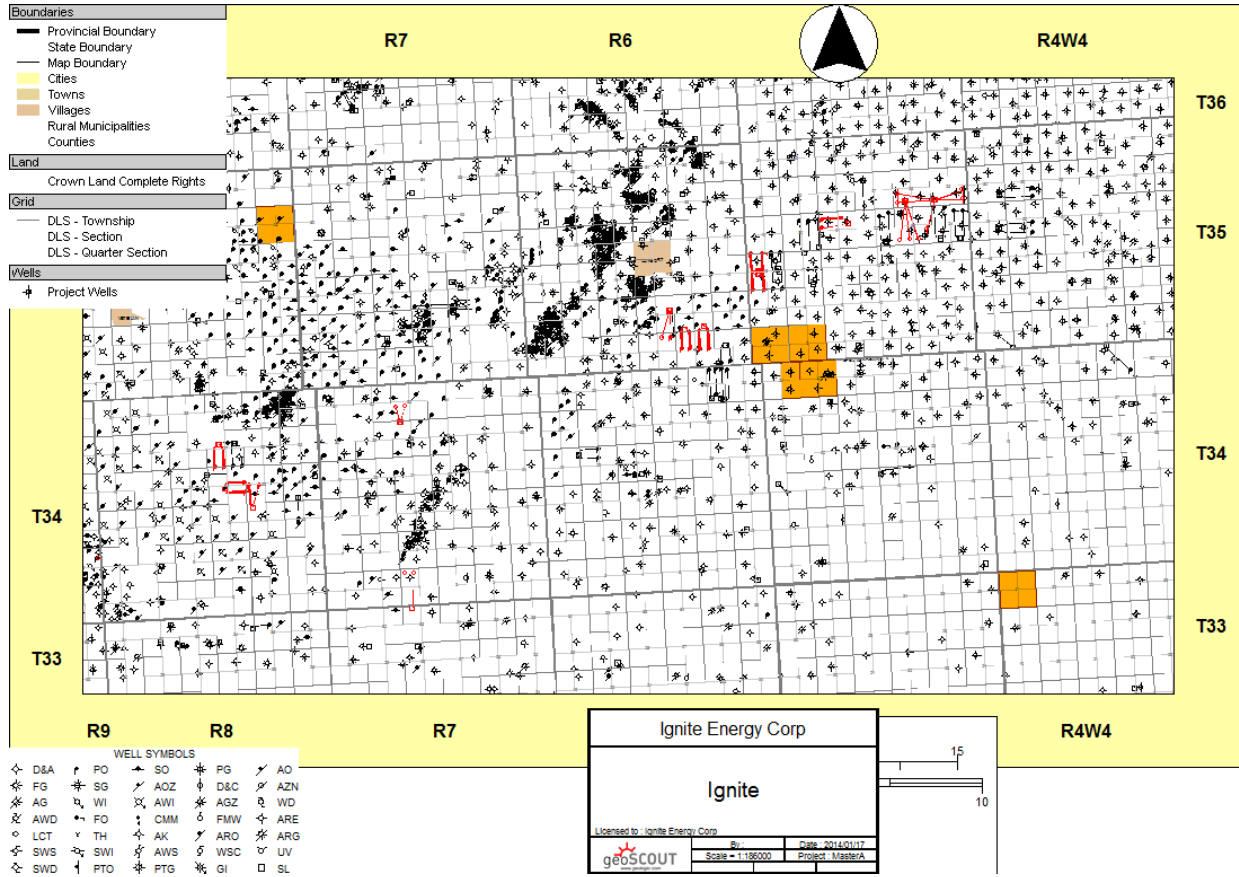
The Lloyd sand play is a complex play with the zone alternately dominated by coal or sand.
 Key is to use seismic to distinguish the zones or drill updip from wet sands.
 If Seismic is compelling enough, a possible Hrz play to increase IPs



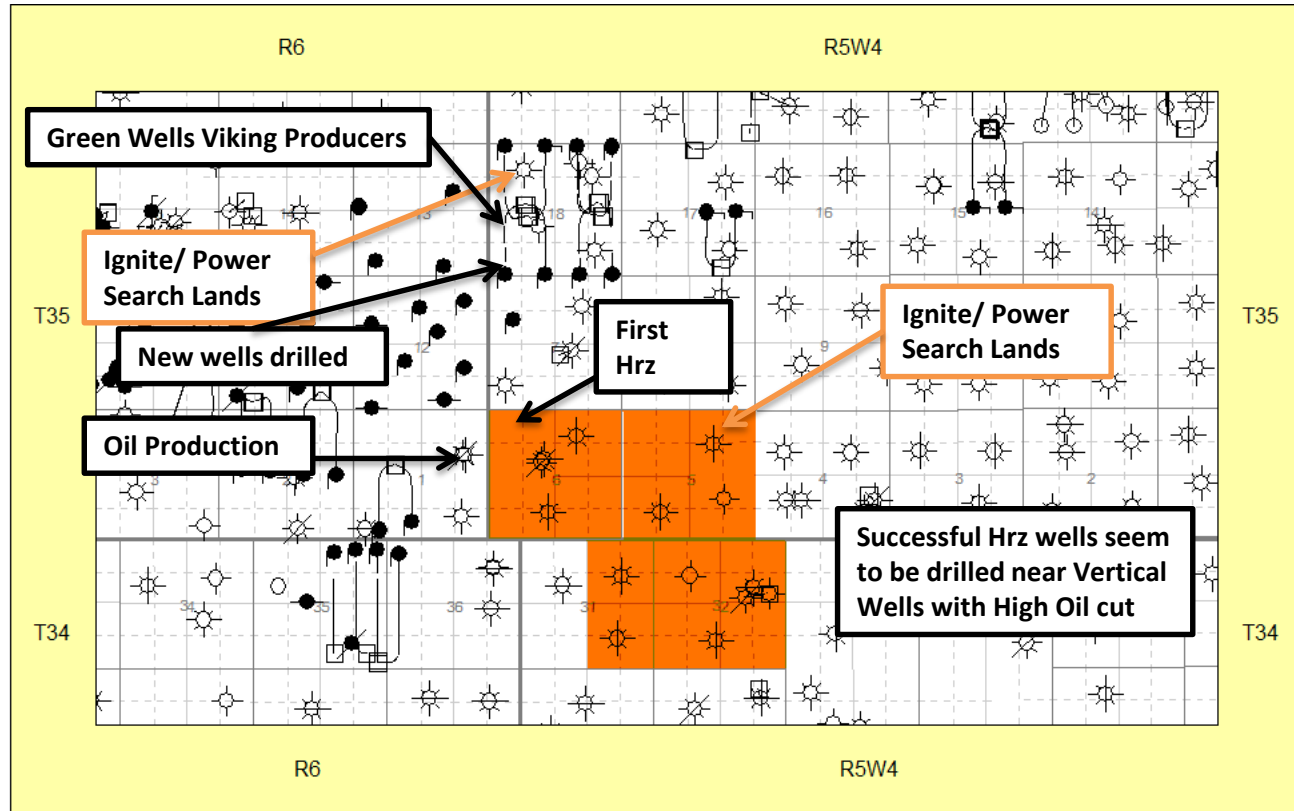


Ignite Energy and Power Search

Consort



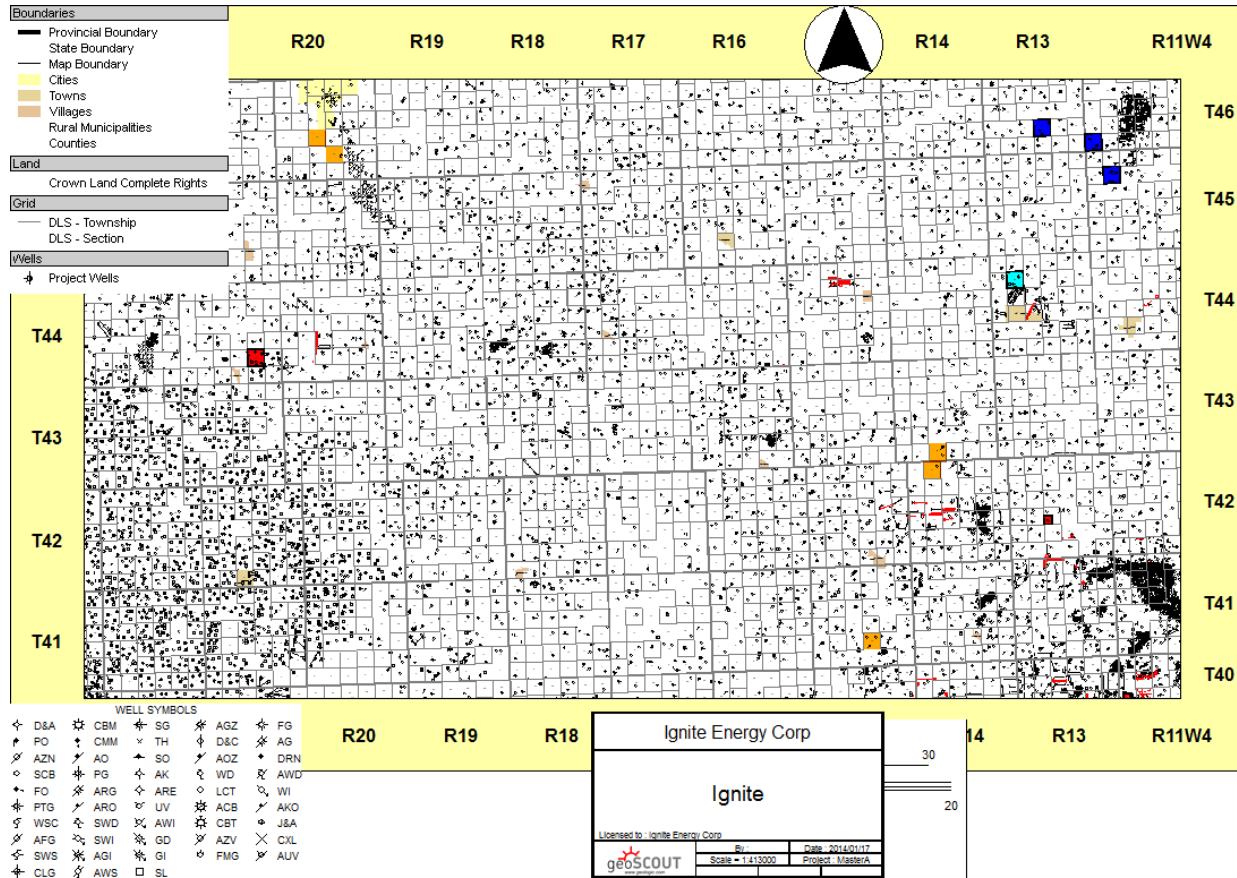
- New Viking Oil Hrzs Play in existing Viking Gas field
- Based on high oil production in existing gas wells
- 3.5 Contiguous Sections

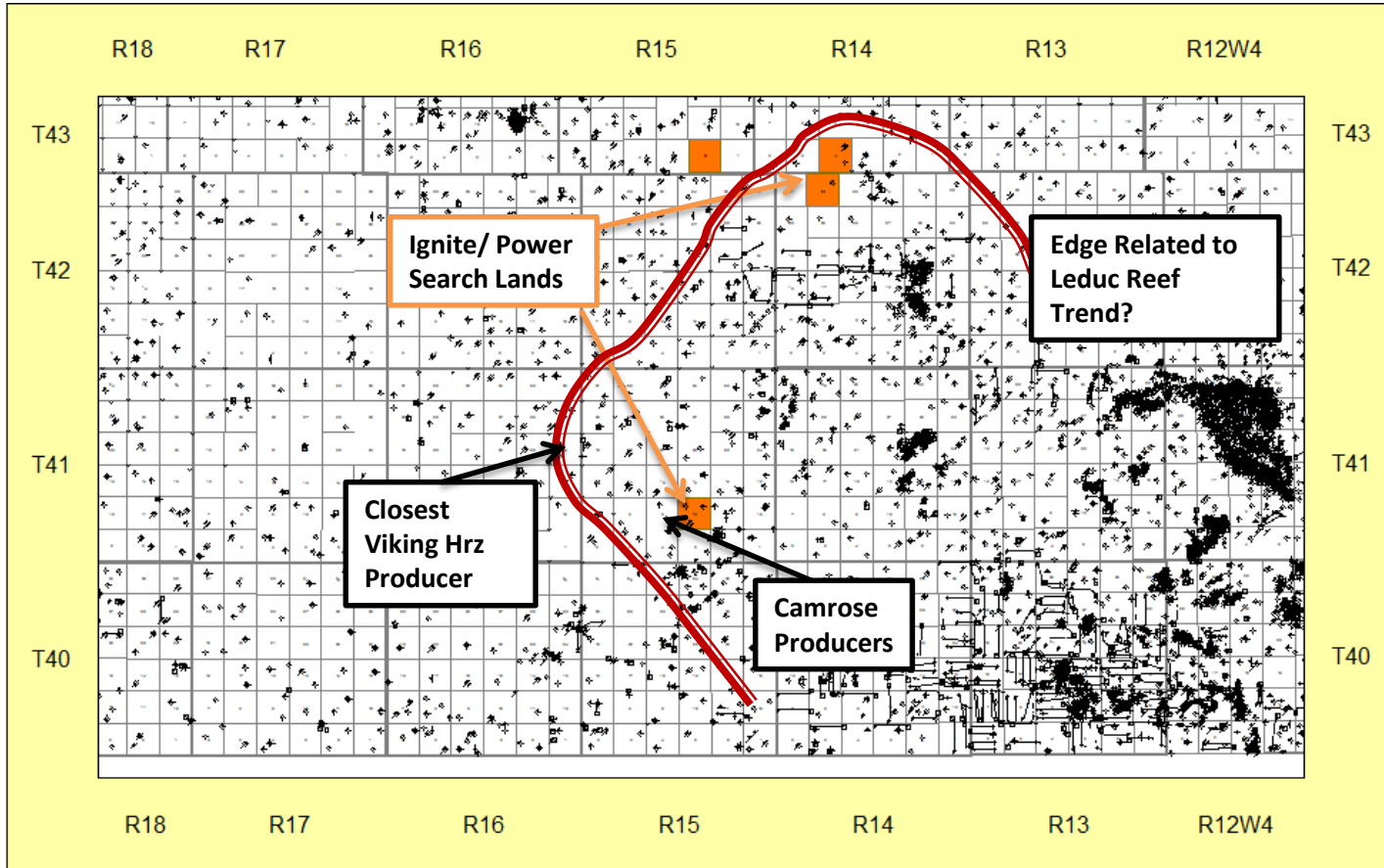




Ignite Energy and Power Search

Halkirk





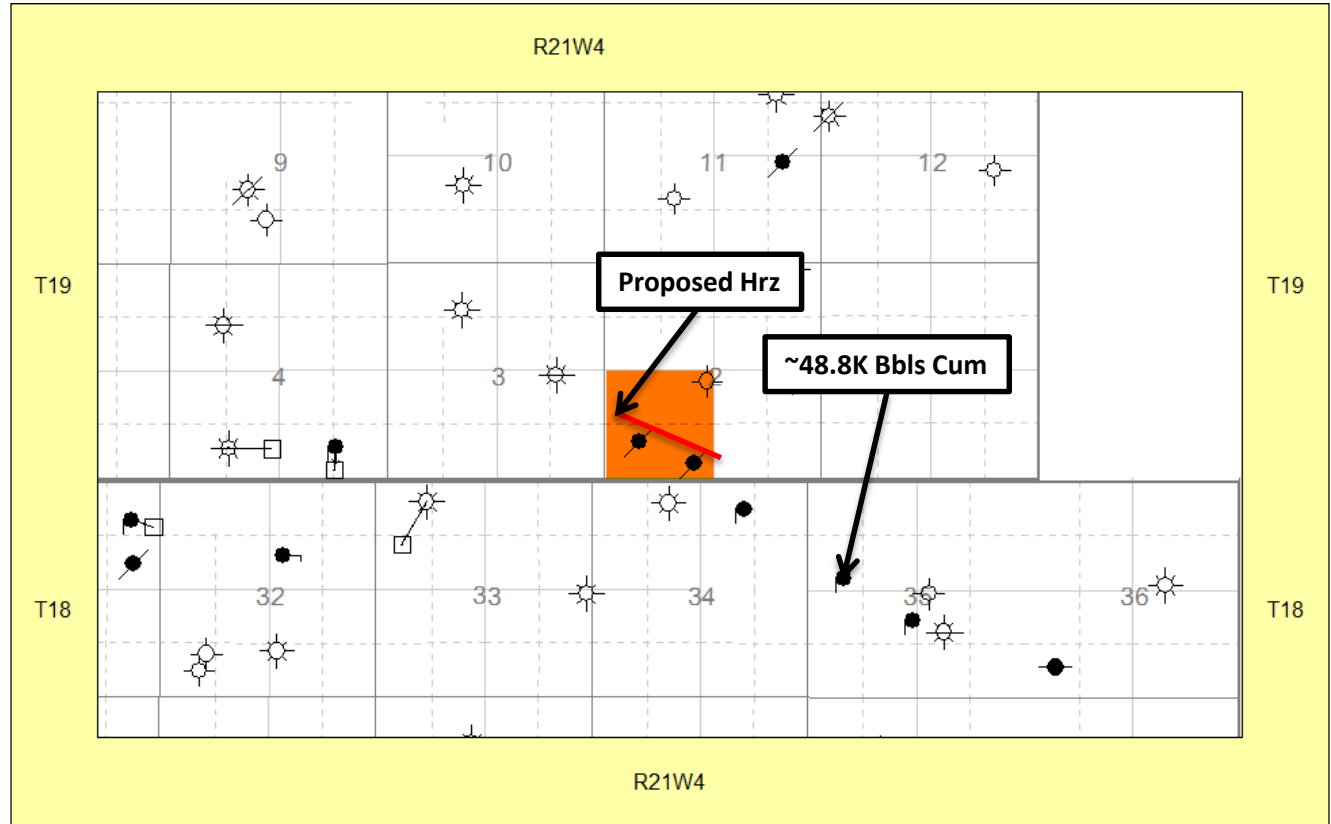


Ignite Energy and Power Search

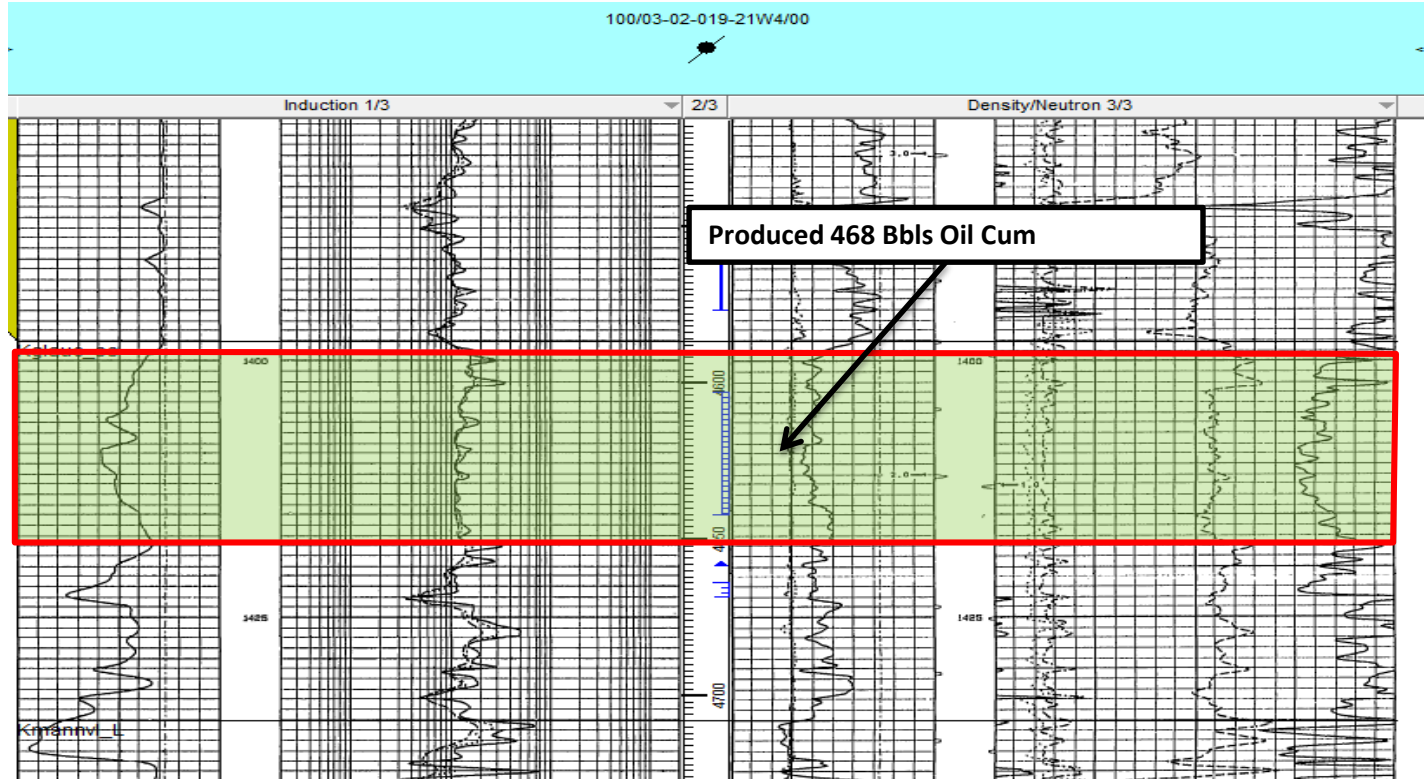
Queenstown

- Ignite and Power Search own a quarter section with a proven Glauconite Channel in the Queenstown area. Recoveries in the two existing wells are poor, and offset oil production is also challenged.

- Upside would be to gain control of the offsetting acreage and drill several hrz wells.



- The Channel appears to be a shaly sand with no bottom water, ideal for a Horizontal well.

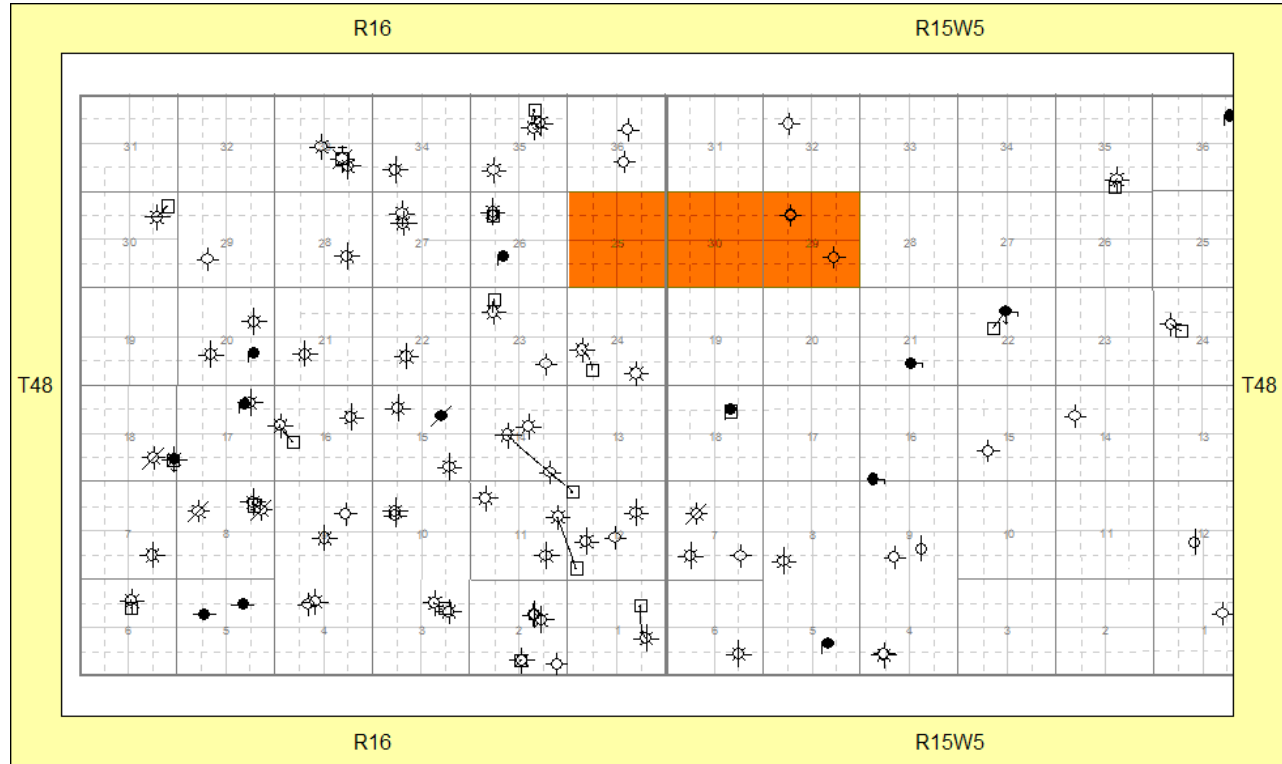




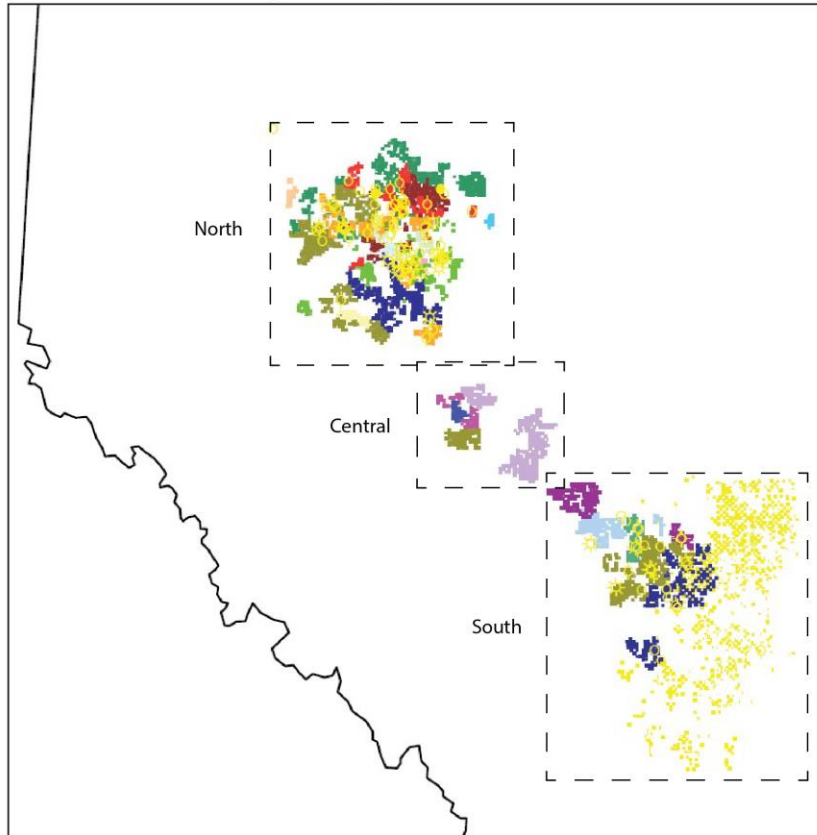
Ignite Energy and Power Search

Peco

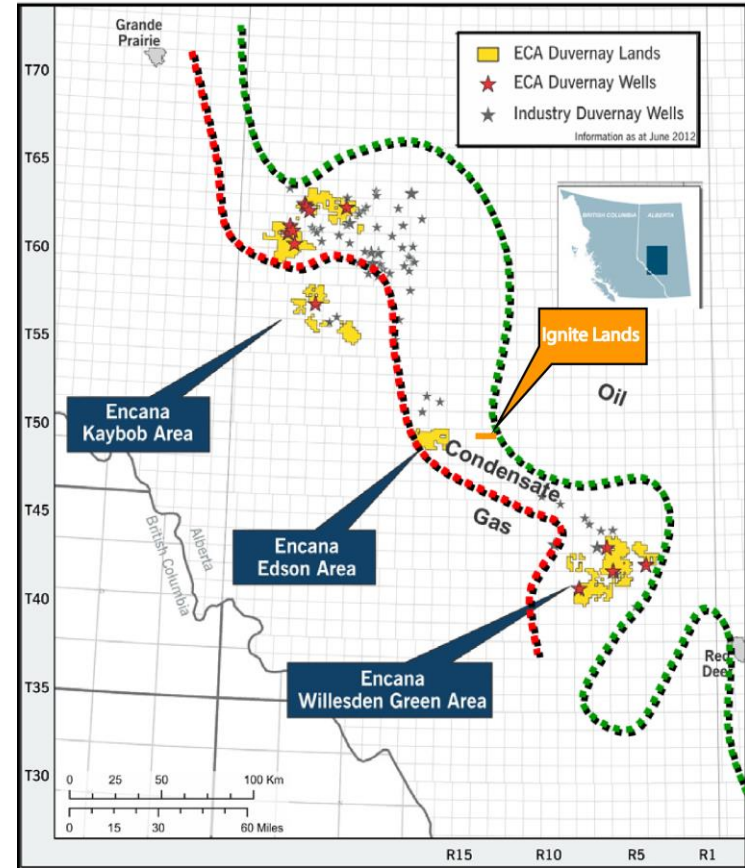
- Ignite holds a licence and lease along the Duvernay shale fairway, Where Petrochine, through Encana paid approximately *\$10,00/per acre.



Duvernay Shale Fairway Overview (December 2012)



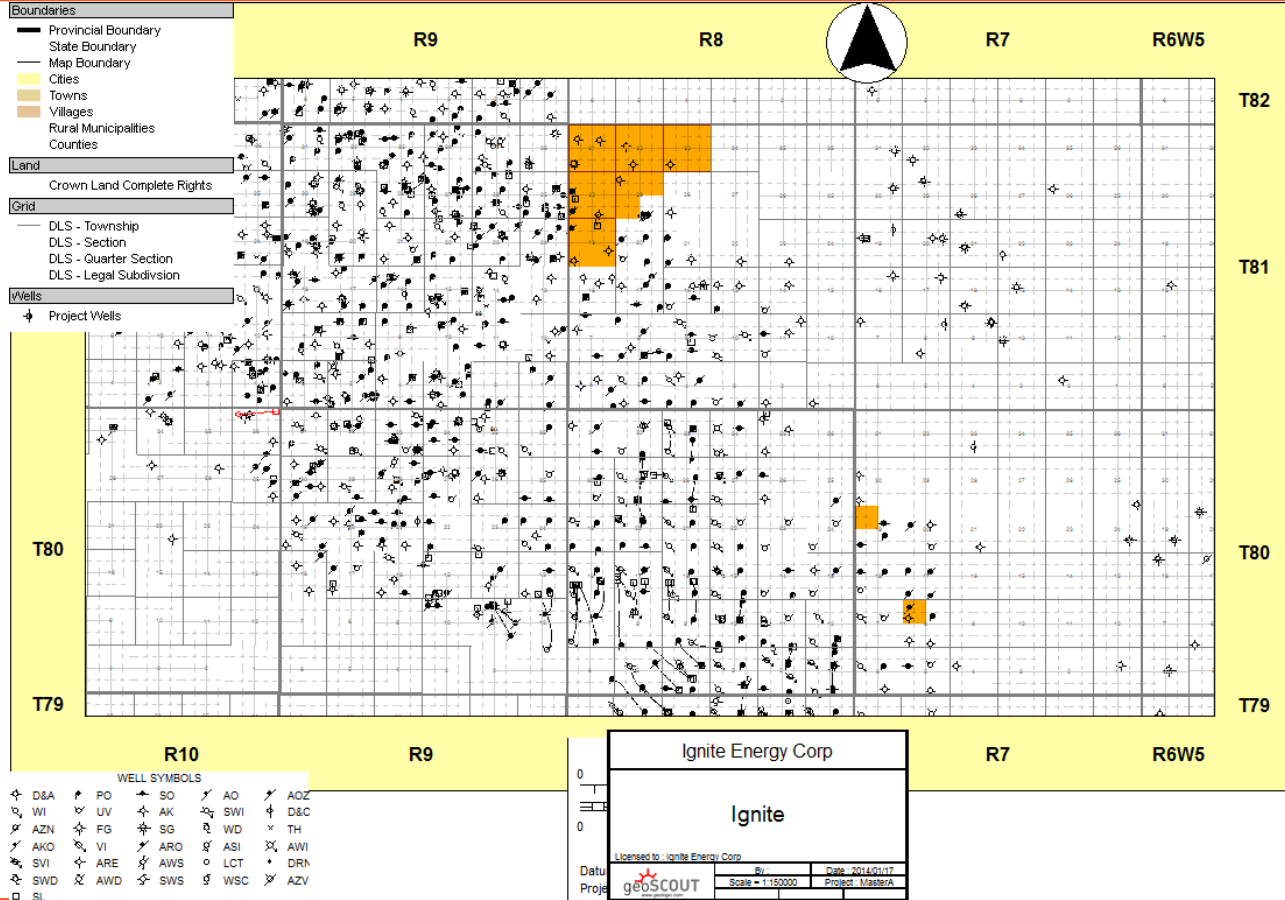
Source: FirstEnergy Capital Corp., AccuMap by IHS



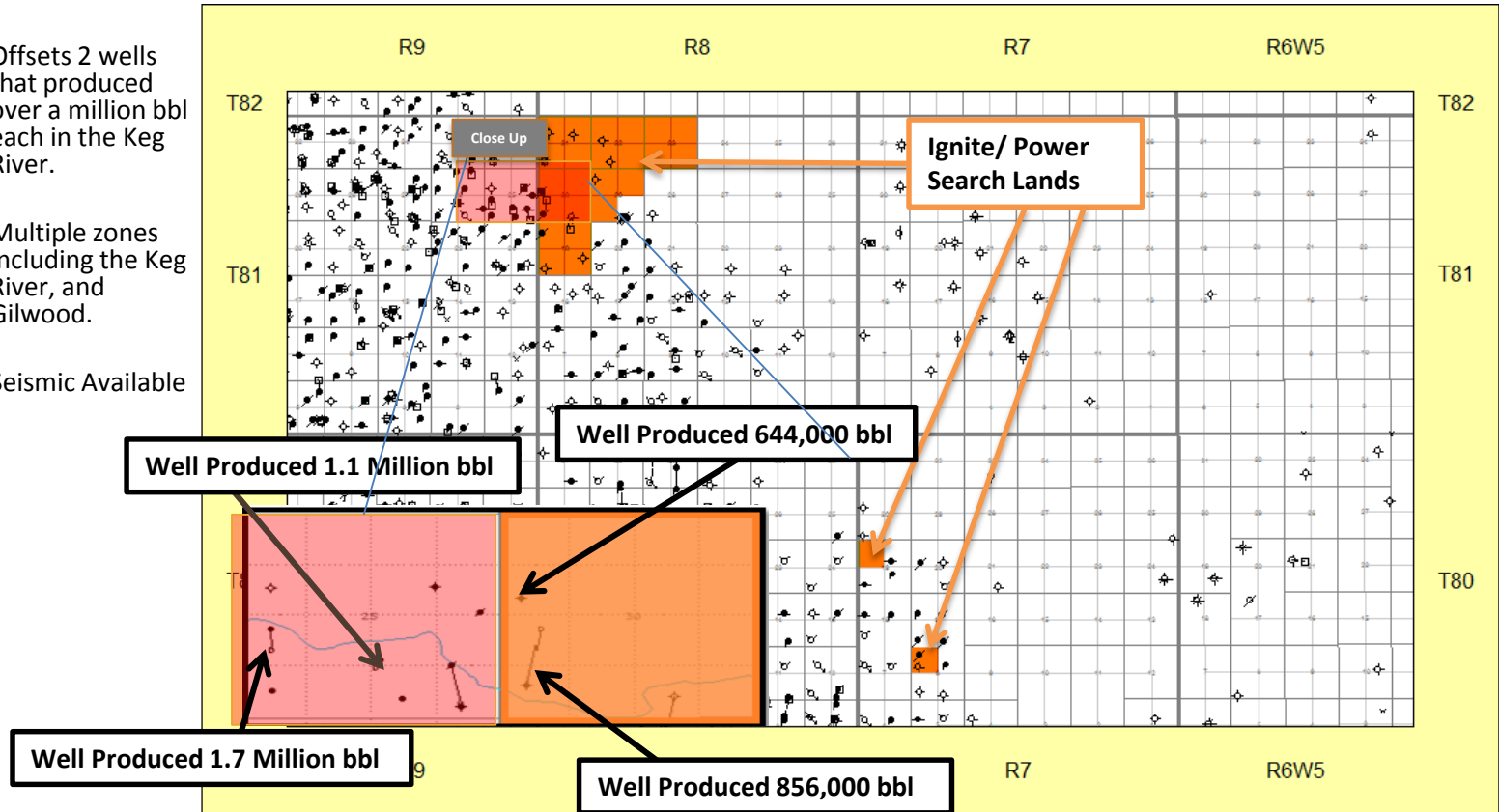


Ignite Energy and Power Search

Utikuma Lake



- Offsets 2 wells that produced over a million bbl each in the Keg River.
- Multiple zones including the Keg River, and Gilwood.
- Seismic Available





Ignite Energy and Power Search

Leduc

- Ignite has acquired lands adjacent to the historic Leduc field where conventional and horizontal drilling for the Nisku is underway.

- 3 new long reach HrZ Nisku licences within close proximity of Ignite and Power Search lands.

